



**ELECTRONIC COPY**

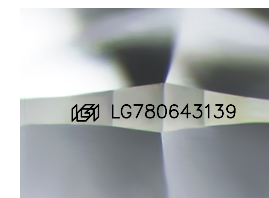
LG780643139  
Report verification at igi.org



March 5, 2026  
IGI Report Number **LG780643139**  
Description **LABORATORY GROWN DIAMOND**  
Shape and Cutting Style **ROUND BRILLIANT**  
Measurements **8.02 - 8.06 X 4.99 MM**

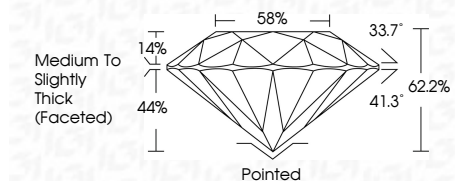
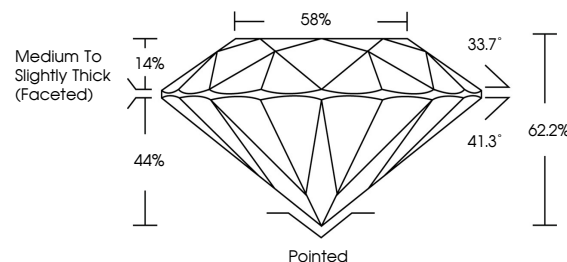
**GRADING RESULTS**

Carat Weight **2.00 CARATS**  
Color Grade **E**  
Clarity Grade **VVS 2**  
Cut Grade **IDEAL**

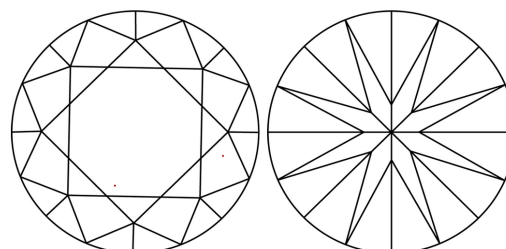


Sample Image Used

**PROPORTIONS**



**CLARITY CHARACTERISTICS**



**KEY TO SYMBOLS**

Red symbols indicate internal characteristics.  
Green symbols indicate external characteristics.

**COLOR**

D E F G H I J Faint Very Light Light

**CLARITY**

FL	IF	VVS <sup>1-2</sup>	VS <sup>1-2</sup>	SI <sup>1-2</sup>	I <sup>1-3</sup>
Flawless	Internally Flawless	Very Very Slightly Included	Very Slightly Included	Slightly Included	Included

**ADDITIONAL GRADING INFORMATION**

Polish **EXCELLENT**  
Symmetry **EXCELLENT**  
Fluorescence **NONE**  
Inscription(s) **IGI LG780643139**  
Comments: This Laboratory Grown Diamond was created by Chemical Vapor Deposition (CVD) growth process. Type IIa



March 5, 2026  
IGI Report No LG780643139  
**ROUND BRILLIANT**  
2.00 CARATS  
E  
8.02 - 8.06 X 4.99 MM  
Color Grade **VVS 2**  
Clarity Grade **IDEAL**  
Depth **62.2%**  
Table **58%**  
Girdle **Medium To Slightly Thick (Faceted)**  
Culet **Pointed**  
Polish **EXCELLENT**  
Symmetry **EXCELLENT**  
Fluorescence **NONE**  
Inscription(s) **IGI LG780643139**  
Comments: This Laboratory Grown Diamond was created by Chemical Vapor Deposition (CVD) growth process. Type IIa