



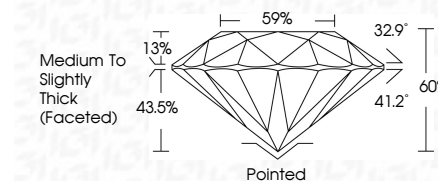
ELECTRONIC COPY

LG780635062 Report verification at igi.org



March 10, 2026 IGI Report Number LG780635062 Description LABORATORY GROWN DIAMOND Shape and Cutting Style ROUND BRILLIANT Measurements 6.52 - 6.56 X 3.92 MM

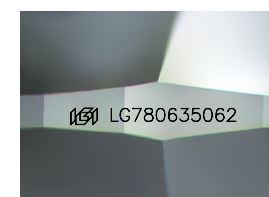
GRADING RESULTS Carat Weight 1.02 CARAT Color Grade D Clarity Grade VVS 2 Cut Grade IDEAL



ADDITIONAL GRADING INFORMATION Polish EXCELLENT Symmetry EXCELLENT Fluorescence NONE Inscription(s) LG780635062 Comments: As Grown - No indication of post-growth treatment. This Laboratory Grown Diamond was created by High Pressure High Temperature (HPHT) growth process. Type II



March 10, 2026 IGI Report No LG780635062 ROUND BRILLIANT 6.52 - 6.56 X 3.92 MM 1.02 CARAT D VVS 2 IDEAL 60% 59% Medium To Slightly Thick (Faceted) Pointed EXCELLENT EXCELLENT NONE NONE LG780635062



Sample Image Used

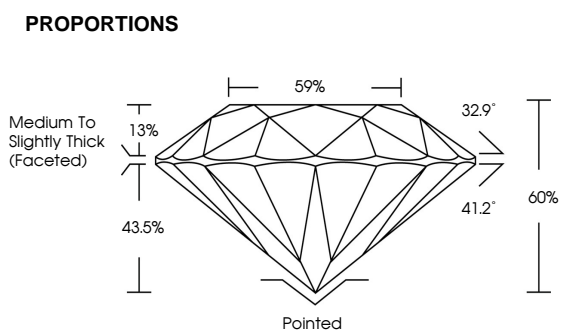


Table with 10 columns: D, E, F, G, H, I, J, Faint, Very Light, Light

Table with 6 columns: FL, IF, VS 1-2, VS 1-2, SI 1-2, I 1-3



March 10, 2026 IGI Report Number LG780635062 Description LABORATORY GROWN DIAMOND Shape and Cutting Style ROUND BRILLIANT Measurements 6.52 - 6.56 X 3.92 MM GRADING RESULTS Carat Weight 1.02 CARAT Color Grade D Clarity Grade VVS 2 Cut Grade IDEAL ADDITIONAL GRADING INFORMATION Polish EXCELLENT Symmetry EXCELLENT Fluorescence NONE Inscription(s) LG780635062 Comments: As Grown - No indication of post-growth treatment. This Laboratory Grown Diamond was created by High Pressure High Temperature (HPHT) growth process. Type II