



**ELECTRONIC COPY**

LG780623430  
Report verification at [igi.org](http://igi.org)



March 6, 2026  
IGI Report Number **LG780623430**  
Description **LABORATORY GROWN DIAMOND**  
Shape and Cutting Style **CUT CORNERED RECTANGULAR MIXED CUT**  
Measurements **11.62 X 7.31 X 4.87 MM**  
**GRADING RESULTS**  
Carat Weight **4.09 CARATS**  
Color Grade **D**  
Clarity Grade **VS 1**

March 6, 2026  
IGI Report Number **LG780623430**  
Description **LABORATORY GROWN DIAMOND**  
Shape and Cutting Style **CUT CORNERED RECTANGULAR MIXED CUT**  
Measurements **11.62 X 7.31 X 4.87 MM**

**GRADING RESULTS**

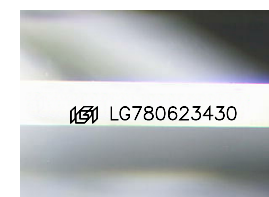
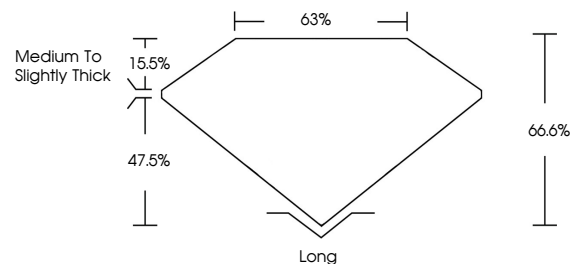
Carat Weight **4.09 CARATS**  
Color Grade **D**  
Clarity Grade **VS 1**

**ADDITIONAL GRADING INFORMATION**

Polish **EXCELLENT**  
Symmetry **EXCELLENT**  
Fluorescence **NONE**  
Inscription(s) **IGI LG780623430**

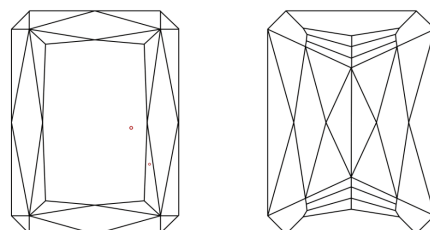
Comments: This Laboratory Grown Diamond was created by Chemical Vapor Deposition (CVD) growth process. Type IIa

**PROPORTIONS**



Sample Image Used

**CLARITY CHARACTERISTICS**



**KEY TO SYMBOLS**

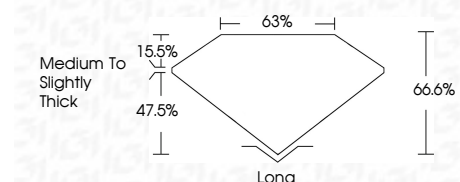
Red symbols indicate internal characteristics.  
Green symbols indicate external characteristics.

**COLOR**

D E F G H I J Faint Very Light Light

**CLARITY**

FL	IF	VS <sup>1-2</sup>	VS <sup>1-2</sup>	SI <sup>1-2</sup>	I <sup>1-3</sup>
Flawless	Internally Flawless	Very Very Slightly Included	Very Slightly Included	Slightly Included	Included



**ADDITIONAL GRADING INFORMATION**

Polish **EXCELLENT**  
Symmetry **EXCELLENT**  
Fluorescence **NONE**  
Inscription(s) **IGI LG780623430**  
Comments: This Laboratory Grown Diamond was created by Chemical Vapor Deposition (CVD) growth process. Type IIa



March 6, 2026  
IGI Report No **LG780623430**  
**CUT CORNERED RECT. MIXED CUT**  
**4.09 CARATS**  
D  
Carat Weight **4.09 CARATS**  
Color Grade **D**  
Clarity Grade **VS 1**  
Depth **47.5%**  
Table **15.5%**  
Girdle **Medium to Slightly Thick**  
Culet **Long**  
Polish **EXCELLENT**  
Symmetry **EXCELLENT**  
Fluorescence **NONE**  
Inscription(s) **IGI LG780623430**  
Comments: This Laboratory Grown Diamond was created by Chemical Vapor Deposition (CVD) growth process. Type IIa