



ELECTRONIC COPY

LG780623429
Report verification at igi.org



March 6, 2026
IGI Report Number **LG780623429**
Description **LABORATORY GROWN DIAMOND**
Shape and Cutting Style **CUT CORNERED RECTANGULAR MIXED CUT**
Measurements **11.50 X 7.31 X 4.86 MM**
GRADING RESULTS
Carat Weight **4.04 CARATS**
Color Grade **D**
Clarity Grade **VVS 2**

LABORATORY GROWN DIAMOND REPORT

March 6, 2026
IGI Report Number **LG780623429**
Description **LABORATORY GROWN DIAMOND**
Shape and Cutting Style **CUT CORNERED RECTANGULAR MIXED CUT**
Measurements **11.50 X 7.31 X 4.86 MM**

GRADING RESULTS

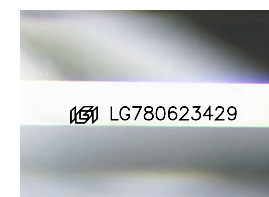
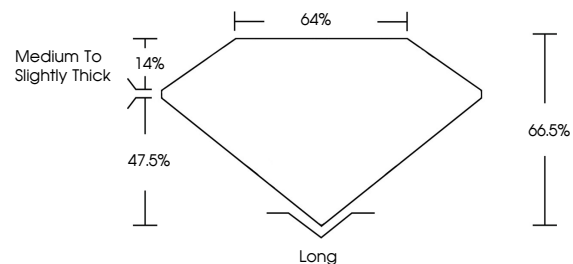
Carat Weight **4.04 CARATS**
Color Grade **D**
Clarity Grade **VVS 2**

ADDITIONAL GRADING INFORMATION

Polish **EXCELLENT**
Symmetry **EXCELLENT**
Fluorescence **NONE**
Inscription(s) **IGI LG780623429**

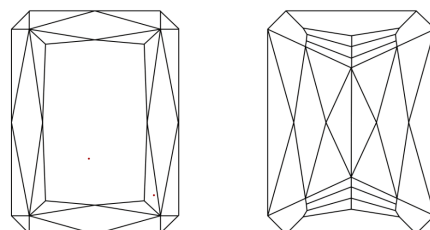
Comments: This Laboratory Grown Diamond was created by Chemical Vapor Deposition (CVD) growth process.
Type IIa

PROPORTIONS



Sample Image Used

CLARITY CHARACTERISTICS



KEY TO SYMBOLS

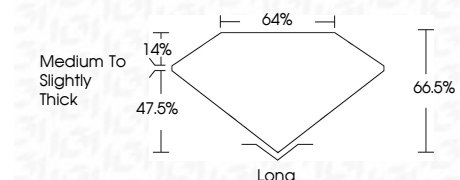
Red symbols indicate internal characteristics.
Green symbols indicate external characteristics.

COLOR

D E F G H I J Faint Very Light Light

CLARITY

FL	IF	VVS ¹⁻²	VS ¹⁻²	SI ¹⁻²	I ¹⁻³
Flawless	Internally Flawless	Very Very Slightly Included	Very Slightly Included	Slightly Included	Included



ADDITIONAL GRADING INFORMATION

Polish **EXCELLENT**
Symmetry **EXCELLENT**
Fluorescence **NONE**
Inscription(s) **IGI LG780623429**
Comments: This Laboratory Grown Diamond was created by Chemical Vapor Deposition (CVD) growth process.
Type IIa



IGI



March 6, 2026
IGI Report No **LG780623429**
CUT CORNERED RECT. MIXED CUT
4.04 CARATS
D
4.04 CARATS
D
VVS 2
66.5%
47.5%
14%
Medium to Slightly Thick
Long
EXCELLENT
EXCELLENT
NONE
IGI LG780623429
Comments: This Laboratory Grown Diamond was created by Chemical Vapor Deposition (CVD) growth process.
Type IIa