



March 11, 2026

IGI Report Number **LG780619312**

**HEART BRILLIANT
LABORATORY GROWN DIAMOND**

5.59 X 5.79 X 3.20 MM

Carat Weight **0.60 CARAT**
Color Grade **FANCY VIVID BLUE**
Clarity Grade **VVS 2**
Polish **EXCELLENT**
Symmetry **VERY GOOD**
Fluorescence **NONE**
Inscription(s) **IGI LG780619312**

Comments: This Laboratory Grown Diamond was created by Chemical Vapor Deposition (CVD) growth process. Indications of post-growth treatment.

LABORATORY GROWN DIAMOND REPORT

March 11, 2026

IGI Report Number

LG780619312

Description

LABORATORY GROWN DIAMOND

Shape and Cutting Style

HEART BRILLIANT

Measurements

5.59 X 5.79 X 3.20 MM

GRADING RESULTS

Carat Weight

0.60 CARAT

Color Grade

FANCY VIVID BLUE

Clarity Grade

VVS 2

ADDITIONAL GRADING INFORMATION

Polish

EXCELLENT

Symmetry

VERY GOOD

Fluorescence

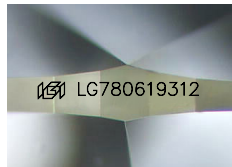
NONE

Inscription(s)

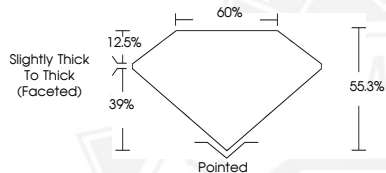
IGI LG780619312

Comments: This Laboratory Grown Diamond was created by Chemical Vapor Deposition (CVD) growth process.

Indications of post-growth treatment.



Sample Image Used



March 11, 2026

IGI Report Number **LG780619312**

**HEART BRILLIANT
LABORATORY GROWN DIAMOND**

5.59 X 5.79 X 3.20 MM

Carat Weight **0.60 CARAT**
Color Grade **FANCY VIVID BLUE**
Clarity Grade **VVS 2**
Polish **EXCELLENT**
Symmetry **VERY GOOD**
Fluorescence **NONE**
Inscription(s) **IGI LG780619312**

Comments: This Laboratory Grown Diamond was created by Chemical Vapor Deposition (CVD) growth process. Indications of post-growth treatment.



THIS DOCUMENT WAS PRODUCED WITH THE FOLLOWING SECURITY MEASURES: SPECIAL DOCUMENT PAPER, INK SCREENS, WATERMARK, BACKGROUND DESIGNS, HOLOGRAM AND OTHER SECURITY FEATURES NOT LISTED AND DO EXCEED DOCUMENT SECURITY INDUSTRY GUIDELINES.