



ELECTRONIC COPY

LG780619187 Report verification at igi.org



March 19, 2026 IGI Report Number LG780619187 Description LABORATORY GROWN DIAMOND

Shape and Cutting Style CUT CORNERED RECTANGULAR MODIFIED BRILLIANT

Measurements 8.76 X 6.31 X 4.00 MM

GRADING RESULTS Carat Weight 2.04 CARATS Color Grade FANCY INTENSE YELLOW Clarity Grade VS 1

March 19, 2026 IGI Report Number LG780619187 Description LABORATORY GROWN DIAMOND Shape and Cutting Style CUT CORNERED RECTANGULAR MODIFIED BRILLIANT Measurements 8.76 X 6.31 X 4.00 MM

GRADING RESULTS

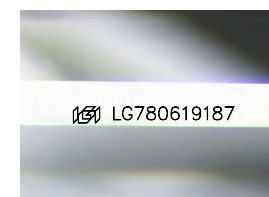
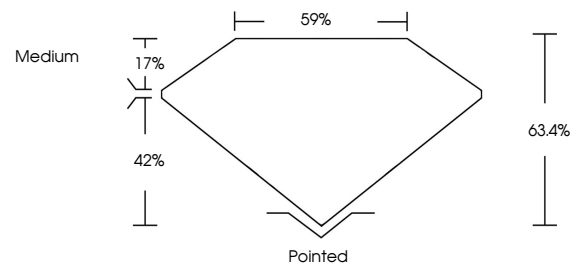
Carat Weight 2.04 CARATS Color Grade FANCY INTENSE YELLOW Clarity Grade VS 1

ADDITIONAL GRADING INFORMATION

Polish EXCELLENT Symmetry EXCELLENT Fluorescence NONE Inscription(s) LG780619187

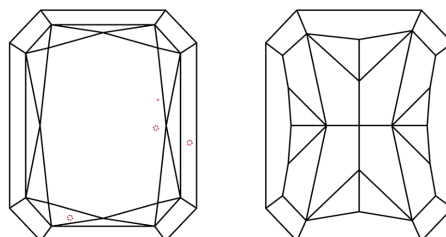
Comments: This Laboratory Grown Diamond was created by Chemical Vapor Deposition (CVD) growth process.

PROPORTIONS



Sample Image Used

CLARITY CHARACTERISTICS



KEY TO SYMBOLS

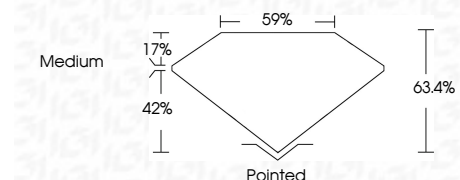
Red symbols indicate internal characteristics. Green symbols indicate external characteristics.

COLOR

D E F G H I J Faint Very Light Light

CLARITY

FL IF VS 1-2 VS 2-3 SI 1-2 I 1-3 Flawless Internally Flawless Very Very Slightly Included Very Slightly Included Slightly Included Included



ADDITIONAL GRADING INFORMATION

Polish EXCELLENT Symmetry EXCELLENT Fluorescence NONE Inscription(s) LG780619187 Comments: This Laboratory Grown Diamond was created by Chemical Vapor Deposition (CVD) growth process.



Summary of report details including date, report number, description, measurements, grading results, and additional information.

Comments: This Laboratory Grown Diamond was created by Chemical Vapor Deposition (CVD) growth process.