



ELECTRONIC COPY

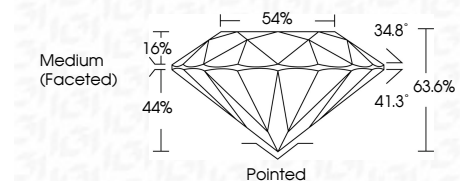
LG780616363
Report verification at igi.org



March 12, 2026
IGI Report Number **LG780616363**
Description **LABORATORY GROWN DIAMOND**
Shape and Cutting Style **ROUND BRILLIANT**
Measurements **8.61 - 8.64 X 5.49 MM**

GRADING RESULTS

Carat Weight **2.50 CARATS**
Color Grade **H**
Clarity Grade **VS 1**
Cut Grade **VERY GOOD**

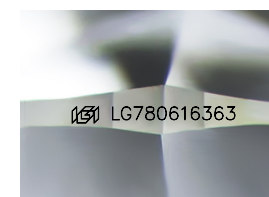


ADDITIONAL GRADING INFORMATION

Polish **EXCELLENT**
Symmetry **EXCELLENT**
Fluorescence **NONE**
Inscription(s) **IGI LG780616363**
Comments: This Laboratory Grown Diamond was created by Chemical Vapor Deposition (CVD) growth process. Type IIa

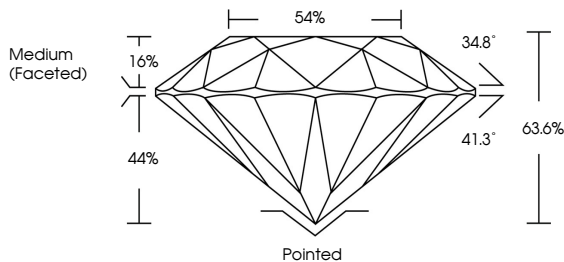


March 12, 2026
IGI Report No LG780616363
ROUND BRILLIANT
8.61 - 8.64 X 5.49 MM
2.50 CARATS
H
Color Grade
VS 1
VERY GOOD
63.6%
54%
Medium (Faceted)
Pointed
EXCELLENT
EXCELLENT
NONE
IGI LG780616363
Inscription(s)
Comments: This Laboratory Grown Diamond was created by Chemical Vapor Deposition (CVD) growth process. Type IIa

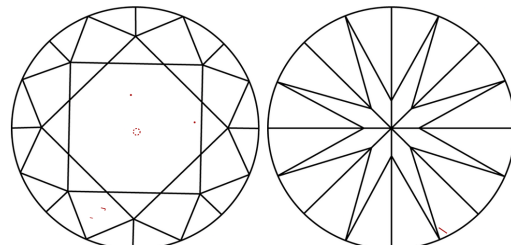


Sample Image Used

PROPORTIONS



CLARITY CHARACTERISTICS



KEY TO SYMBOLS

Red symbols indicate internal characteristics.
Green symbols indicate external characteristics.

COLOR

| | | | | | | | | | |
|---|---|---|---|---|---|---|-------|------------|-------|
| D | E | F | G | H | I | J | Faint | Very Light | Light |
|---|---|---|---|---|---|---|-------|------------|-------|

CLARITY

| | | | | | |
|----------|---------------------|-----------------------------|------------------------|-------------------|------------------|
| FL | IF | VS ¹⁻² | VS ¹⁻² | SI ¹⁻² | I ¹⁻³ |
| Flawless | Internally Flawless | Very Very Slightly Included | Very Slightly Included | Slightly Included | Included |

