



**ELECTRONIC COPY**

LG780616362  
Report verification at igi.org



March 24, 2026  
IGI Report Number **LG780616362**  
Description **LABORATORY GROWN DIAMOND**  
Shape and Cutting Style **ROUND BRILLIANT**  
Measurements **6.97 - 7.00 X 3.94 MM**  
**GRADING RESULTS**  
Carat Weight **1.21 CARAT**  
Color Grade **G**  
Clarity Grade **VS 1**  
Cut Grade **FAIR**

**LABORATORY GROWN DIAMOND REPORT**

March 24, 2026  
IGI Report Number **LG780616362**  
Description **LABORATORY GROWN DIAMOND**  
Shape and Cutting Style **ROUND BRILLIANT**  
Measurements **6.97 - 7.00 X 3.94 MM**

**GRADING RESULTS**

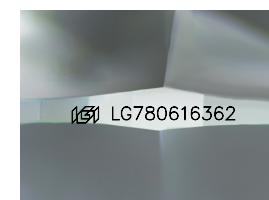
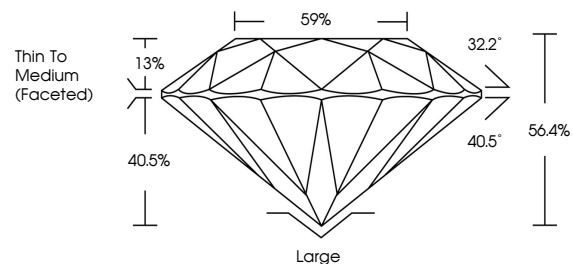
Carat Weight **1.21 CARAT**  
Color Grade **G**  
Clarity Grade **VS 1**  
Cut Grade **FAIR**

**ADDITIONAL GRADING INFORMATION**

Polish **EXCELLENT**  
Symmetry **EXCELLENT**  
Fluorescence **NONE**  
Inscription(s) **IGI LG780616362**

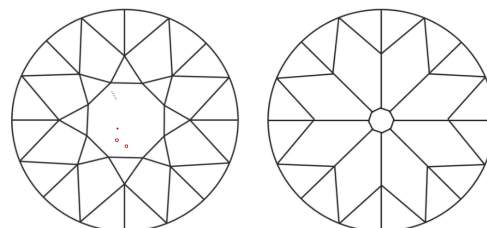
Comments: This Laboratory Grown Diamond was created by Chemical Vapor Deposition (CVD) growth process.  
Type IIa

**PROPORTIONS**



Sample Image Used

**CLARITY CHARACTERISTICS**



**KEY TO SYMBOLS**

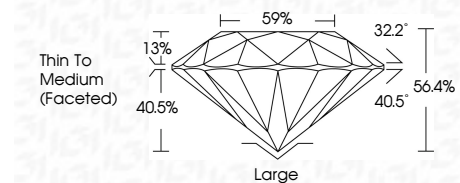
Red symbols indicate internal characteristics.  
Green symbols indicate external characteristics.

**COLOR**

D E F G H I J Faint Very Light Light

**CLARITY**

FL	IF	VS <sup>1-2</sup>	VS <sup>1-2</sup>	SI <sup>1-2</sup>	I <sup>1-3</sup>
Flawless	Internally Flawless	Very Very Slightly Included	Very Slightly Included	Slightly Included	Included



**ADDITIONAL GRADING INFORMATION**

Polish **EXCELLENT**  
Symmetry **EXCELLENT**  
Fluorescence **NONE**  
Inscription(s) **IGI LG780616362**  
Comments: This Laboratory Grown Diamond was created by Chemical Vapor Deposition (CVD) growth process.  
Type IIa



March 24, 2026  
IGI Report No LG780616362  
**ROUND BRILLIANT**  
6.97 - 7.00 X 3.94 MM  
1.21 CARAT  
Color Grade **G**  
Clarity Grade **VS 1**  
Cut Grade **FAIR**  
Depth **66.4%**  
Table **59%**  
Girdle **Thin To Medium (Faceted)**  
Culet **Large**  
Polish **EXCELLENT**  
Symmetry **EXCELLENT**  
Fluorescence **NONE**  
Inscription(s) **IGI LG780616362**  
Comments: This Laboratory Grown Diamond was created by Chemical Vapor Deposition (CVD) growth process.  
Type IIa