



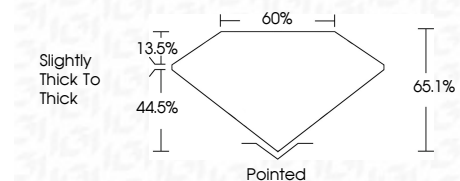
ELECTRONIC COPY

LG780616036
Report verification at igi.org



March 17, 2026
IGI Report Number **LG780616036**
Description **LABORATORY GROWN DIAMOND**
Shape and Cutting Style **TRAPEZE BRILLIANT CUT**
Measurements **8.17 X 5.21 X 3.39 MM**

GRADING RESULTS
Carat Weight **1.12 CARAT**
Color Grade **E**
Clarity Grade **SI 1**



ADDITIONAL GRADING INFORMATION
Polish **EXCELLENT**
Symmetry **EXCELLENT**
Fluorescence **NONE**
Inscription(s) **IGI LG780616036**
Comments: As Grown - No indication of post-growth treatment.
This Laboratory Grown Diamond was created by High Pressure High Temperature (HPHT) growth process.
Type II



March 17, 2026
IGI Report No LG780616036
TRAPEZE BRILLIANT CUT
8.17 X 5.21 X 3.39 MM
1.12 CARAT
E
SI 1
65.1%
44.5%
Slightly thick to thick
Pointed
EXCELLENT
EXCELLENT
NONE
IGI LG780616036
Comments: As Grown - No indication of post-growth treatment.
This Laboratory Grown Diamond was created by High Pressure High Temperature (HPHT) growth process.
Type II

LABORATORY GROWN DIAMOND REPORT

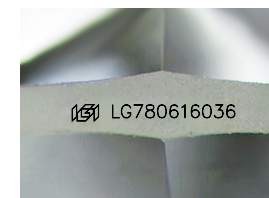
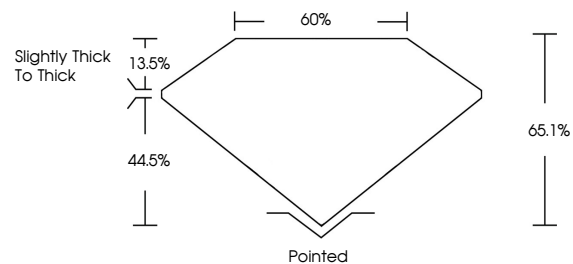
March 17, 2026
IGI Report Number **LG780616036**
Description **LABORATORY GROWN DIAMOND**
Shape and Cutting Style **TRAPEZE BRILLIANT CUT**
Measurements **8.17 X 5.21 X 3.39 MM**

GRADING RESULTS
Carat Weight **1.12 CARAT**
Color Grade **E**
Clarity Grade **SI 1**

ADDITIONAL GRADING INFORMATION
Polish **EXCELLENT**
Symmetry **EXCELLENT**
Fluorescence **NONE**
Inscription(s) **IGI LG780616036**

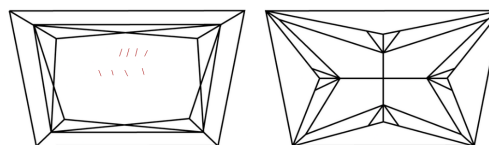
Comments: As Grown - No indication of post-growth treatment.
This Laboratory Grown Diamond was created by High Pressure High Temperature (HPHT) growth process.
Type II

PROPORTIONS



Sample Image Used

CLARITY CHARACTERISTICS



KEY TO SYMBOLS

Red symbols indicate internal characteristics.
Green symbols indicate external characteristics.

COLOR

D E F G H I J Faint Very Light Light

CLARITY

FL	IF	VS ¹⁻²	VS ¹⁻²	SI ¹⁻²	I ¹⁻³
Flawless	Internally Flawless	Very Very Slightly Included	Very Slightly Included	Slightly Included	Included

