



ELECTRONIC COPY

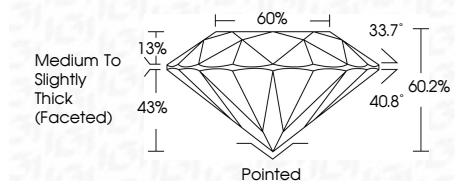
LG780615724
Report verification at igi.org



March 9, 2026
IGI Report Number **LG780615724**
Description **LABORATORY GROWN DIAMOND**
Shape and Cutting Style **ROUND BRILLIANT**
Measurements **7.38 - 7.44 X 4.46 MM**

GRADING RESULTS

Carat Weight **1.51 CARAT**
Color Grade **FANCY INTENSE BROWNISH PINK**
Clarity Grade **VS 1**
Cut Grade **IDEAL**

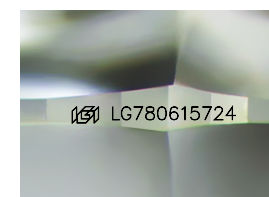


ADDITIONAL GRADING INFORMATION

Polish **EXCELLENT**
Symmetry **EXCELLENT**
Fluorescence **SLIGHT**
Inscription(s) **IGI LG780615724**
Comments: This Laboratory Grown Diamond was created by Chemical Vapor Deposition (CVD) growth process. Indications of post-growth treatment.

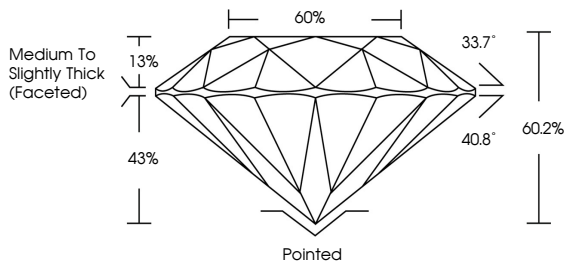


March 9, 2026
IGI Report No LG780615724
ROUND BRILLIANT
1.51 CARAT
Carat Weight
Color Grade **FANCY INTENSE BROWNISH PINK**
Clarity Grade **VS 1**
Cut Grade **IDEAL**
Depth **60.2%**
Table
Girdle
Medium To Slightly Thick (Faceted)
Culet
Polish **EXCELLENT**
Symmetry **EXCELLENT**
Fluorescence **SLIGHT**
Inscriptions(s) **IGI LG780615724**
Comments: This Laboratory Grown Diamond was created by Chemical Vapor Deposition (CVD) growth process. Indications of post-growth treatment.

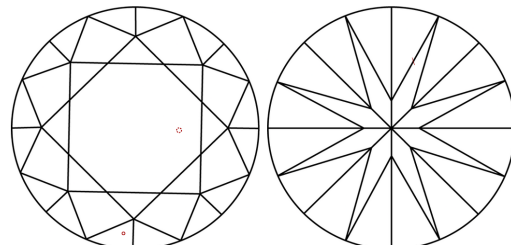


Sample Image Used

PROPORTIONS



CLARITY CHARACTERISTICS



KEY TO SYMBOLS

Red symbols indicate internal characteristics.
Green symbols indicate external characteristics.

COLOR

D	E	F	G	H	I	J	Faint	Very Light	Light
---	---	---	---	---	---	---	-------	------------	-------

CLARITY

FL	IF	VS ¹⁻²	VS ¹⁻²	SI ¹⁻²	I ¹⁻³
Flawless	Internally Flawless	Very Very Slightly Included	Very Slightly Included	Slightly Included	Included

