



**ELECTRONIC COPY**

**LABORATORY GROWN DIAMOND REPORT**

March 9, 2026  
IGI Report Number **LG780615643**

Description **LABORATORY GROWN DIAMOND**

Shape and Cutting Style **CUT CORNERED RECTANGULAR  
BRILLIANT**

Measurements **8.72 X 5.66 X 3.71 MM**

**GRADING RESULTS**

Carat Weight **1.74 CARAT**

Color Grade **D**

Clarity Grade **VVS 2**

**ADDITIONAL GRADING INFORMATION**

Polish **EXCELLENT**

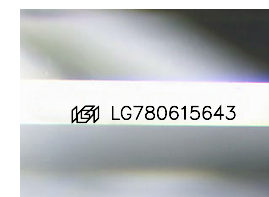
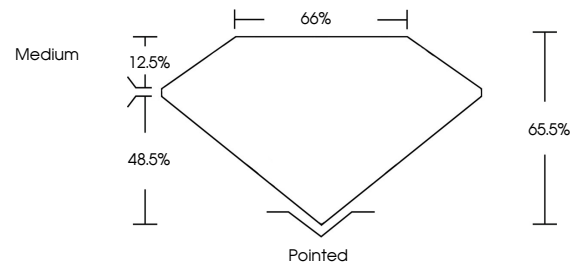
Symmetry **EXCELLENT**

Fluorescence **NONE**

Inscription(s) **IGI LG780615643**

Comments: This Laboratory Grown Diamond was created by Chemical Vapor Deposition (CVD) growth process.  
Type IIa

**PROPORTIONS**



Sample Image Used

**COLOR**

D E F G H I J Faint Very Light Light

**CLARITY**

FL	IF	VVS <sup>1-2</sup>	VS <sup>1-2</sup>	SI <sup>1-2</sup>	I <sup>1-3</sup>
Flawless	Internally Flawless	Very Very Slightly Included	Very Slightly Included	Slightly Included	Included



March 9, 2026

IGI Report Number **LG780615643**

Description **LABORATORY GROWN DIAMOND**

Shape and Cutting Style **CUT CORNERED  
RECTANGULAR BRILLIANT**

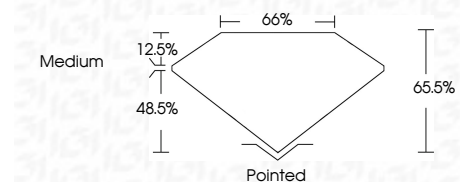
Measurements **8.72 X 5.66 X 3.71 MM**

**GRADING RESULTS**

Carat Weight **1.74 CARAT**

Color Grade **D**

Clarity Grade **VVS 2**



**ADDITIONAL GRADING INFORMATION**

Polish **EXCELLENT**

Symmetry **EXCELLENT**

Fluorescence **NONE**

Inscription(s) **IGI LG780615643**

Comments: This Laboratory Grown Diamond was created by Chemical Vapor Deposition (CVD) growth process.  
Type IIa



**IGI**



March 9, 2026  
IGI Report No. LG780615643  
CUT CORNERED RECT. BRILLIANT

1.74 CARAT  
D

8.72 X 5.66 X 3.71 MM  
VVS 2  
65.5%  
65%  
Medium

Pointed  
EXCELLENT  
EXCELLENT  
NONE  
IGI LG780615643

Comments: This Laboratory Grown Diamond was created by Chemical Vapor Deposition (CVD) growth process.  
Type IIa