



**ELECTRONIC COPY**

LG780614116  
Report verification at igi.org



March 8, 2026

IGI Report Number **LG780614116**

Description **LABORATORY GROWN DIAMOND**

Shape and Cutting Style **ROUND BRILLIANT**

Measurements **8.03 - 8.09 X 4.96 MM**

**GRADING RESULTS**

Carat Weight **1.96 CARAT**

Color Grade **E**

Clarity Grade **VVS 2**

Cut Grade **IDEAL**

March 8, 2026

IGI Report Number **LG780614116**

Description **LABORATORY GROWN DIAMOND**

Shape and Cutting Style **ROUND BRILLIANT**

Measurements **8.03 - 8.09 X 4.96 MM**

**GRADING RESULTS**

Carat Weight **1.96 CARAT**

Color Grade **E**

Clarity Grade **VVS 2**

Cut Grade **IDEAL**

**ADDITIONAL GRADING INFORMATION**

Polish **EXCELLENT**

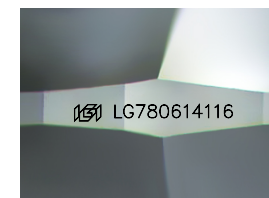
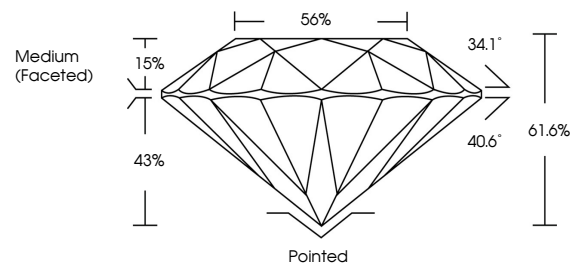
Symmetry **EXCELLENT**

Fluorescence **NONE**

Inscription(s) **LG780614116**

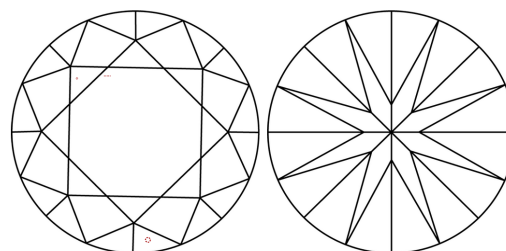
Comments: This Laboratory Grown Diamond was created by Chemical Vapor Deposition (CVD) growth process.  
Type IIa

**PROPORTIONS**



Sample Image Used

**CLARITY CHARACTERISTICS**



**KEY TO SYMBOLS**

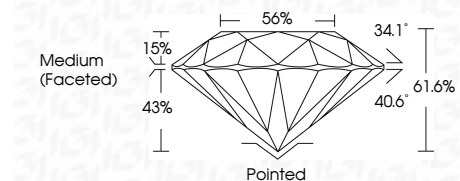
Red symbols indicate internal characteristics.  
Green symbols indicate external characteristics.

**COLOR**

D E F G H I J Faint Very Light Light

**CLARITY**

FL	IF	VVS <sup>1-2</sup>	VS <sup>1-2</sup>	SI <sup>1-2</sup>	I <sup>1-3</sup>
Flawless	Internally Flawless	Very Very Slightly Included	Very Slightly Included	Slightly Included	Included



**ADDITIONAL GRADING INFORMATION**

Polish **EXCELLENT**

Symmetry **EXCELLENT**

Fluorescence **NONE**

Inscription(s) **LG780614116**

Comments: This Laboratory Grown Diamond was created by Chemical Vapor Deposition (CVD) growth process.  
Type IIa



**IGI**



March 8, 2026	IGI Report No LG780614116	1.96 CARAT	E	Pointed	EXCELLENT	EXCELLENT	NONE	LG780614116
ROUND BRILLIANT	8.03 - 8.09 X 4.96 MM	Color Grade	VVS 2	Depth	IDEAL	61.6%	56%	Medium (Faceted)
		Clarity Grade	IDEAL	Crown Angle	34.1°	Pavilion Angle	40.6°	Cut Grade
		Polish	EXCELLENT	Symmetry	EXCELLENT	Fluorescence	NONE	Inscription(s)
		Symmetry	EXCELLENT	Fluorescence	NONE	Inscription(s)	LG780614116	

Comments: This Laboratory Grown Diamond was created by Chemical Vapor Deposition (CVD) growth process.  
Type IIa