



**ELECTRONIC COPY**

LG780613640  
Report verification at [igi.org](http://igi.org)



March 10, 2026

IGI Report Number **LG780613640**

Description **LABORATORY GROWN DIAMOND**

Shape and Cutting Style **EMERALD CUT**

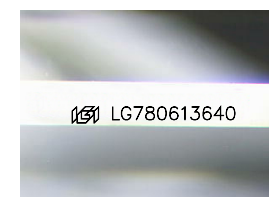
Measurements **9.35 X 6.50 X 4.29 MM**

**GRADING RESULTS**

Carat Weight **2.58 CARATS**

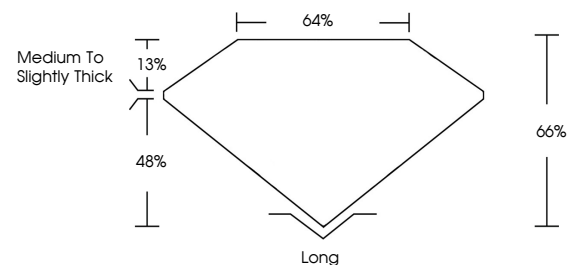
Color Grade **FANCY INTENSE GREEN BLUE**

Clarity Grade **VS 1**

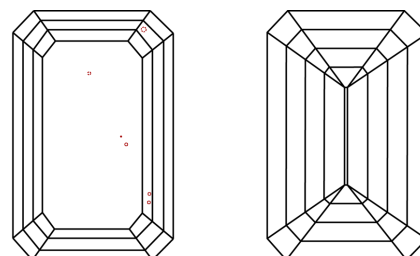


Sample Image Used

**PROPORTIONS**



**CLARITY CHARACTERISTICS**



**KEY TO SYMBOLS**

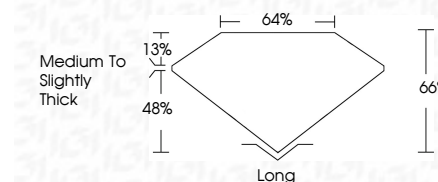
Red symbols indicate internal characteristics.  
Green symbols indicate external characteristics.

**COLOR**

D E F G H I J Faint Very Light Light

**CLARITY**

FL	IF	VS <sup>1-2</sup>	VS <sup>1-2</sup>	SI <sup>1-2</sup>	I <sup>1-3</sup>
Flawless	Internally Flawless	Very Very Slightly Included	Very Slightly Included	Slightly Included	Included



**ADDITIONAL GRADING INFORMATION**

Polish **EXCELLENT**

Symmetry **EXCELLENT**

Fluorescence **NONE**

Inscription(s) **IGI LG780613640**

Comments: This Laboratory Grown Diamond was created by Chemical Vapor Deposition (CVD) growth process. Indications of post-growth treatment.



**IGI**



March 10, 2026	IGI Report No LG780613640	EMERALD CUT	2.58 CARATS	FANCY INTENSE GREEN BLUE	VS 1	66%	48%	Medium to Slightly Thick	Long	EXCELLENT	EXCELLENT	NONE	IGI LG780613640
IGI Report No LG780613640	EMERALD CUT	9.35 X 6.50 X 4.29 MM	2.58 CARATS	FANCY INTENSE GREEN BLUE	VS 1	66%	48%	Medium to Slightly Thick	Long	EXCELLENT	EXCELLENT	NONE	IGI LG780613640
IGI Report No LG780613640	EMERALD CUT	9.35 X 6.50 X 4.29 MM	2.58 CARATS	FANCY INTENSE GREEN BLUE	VS 1	66%	48%	Medium to Slightly Thick	Long	EXCELLENT	EXCELLENT	NONE	IGI LG780613640

Comments: This Laboratory Grown Diamond was created by Chemical Vapor Deposition (CVD) growth process. Indications of post-growth treatment.