



ELECTRONIC COPY

LG780612300
Report verification at igi.org



March 9, 2026
IGI Report Number **LG780612300**
Description **LABORATORY GROWN DIAMOND**
Shape and Cutting Style **CUT CORNERED
RECTANGULAR MODIFIED
BRILLIANT**
Measurements **8.09 X 5.76 X 4.02 MM**
GRADING RESULTS
Carat Weight **1.58 CARAT**
Color Grade **FANCY LIGHT YELLOWISH
BROWN**
Clarity Grade **VS 1**

March 9, 2026
IGI Report Number **LG780612300**
Description **LABORATORY GROWN DIAMOND**
Shape and Cutting Style **CUT CORNERED RECTANGULAR
MODIFIED BRILLIANT**
Measurements **8.09 X 5.76 X 4.02 MM**

GRADING RESULTS

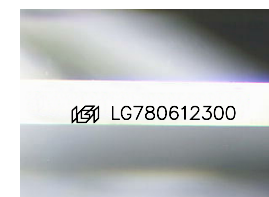
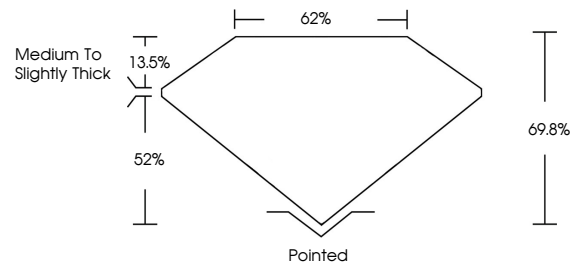
Carat Weight **1.58 CARAT**
Color Grade **FANCY LIGHT YELLOWISH
BROWN**
Clarity Grade **VS 1**

ADDITIONAL GRADING INFORMATION

Polish **EXCELLENT**
Symmetry **EXCELLENT**
Fluorescence **NONE**
Inscription(s) **IGI LG780612300**

Comments: This Laboratory Grown Diamond was created by Chemical Vapor Deposition (CVD) growth process.

PROPORTIONS



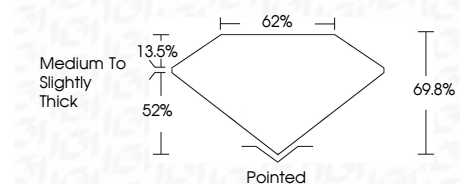
Sample Image Used

COLOR

D E F G H I J Faint Very Light Light

CLARITY

| FL | IF | VS ¹⁻² | VS ¹⁻² | SI ¹⁻² | I ¹⁻³ |
|----------|---------------------|-----------------------------|------------------------|-------------------|------------------|
| Flawless | Internally Flawless | Very Very Slightly Included | Very Slightly Included | Slightly Included | Included |



ADDITIONAL GRADING INFORMATION

Polish **EXCELLENT**
Symmetry **EXCELLENT**
Fluorescence **NONE**
Inscription(s) **IGI LG780612300**
Comments: This Laboratory Grown Diamond was created by Chemical Vapor Deposition (CVD) growth process.



IGI



March 9, 2026
IGI Report No **LG780612300**
CUT CORNERED RECT. MODIFIED BRILLIANT
8.09 X 5.76 X 4.02 MM
Carat Weight **1.58 CARAT**
Color Grade **FANCY LIGHT
YELLOWISH BROWN**
Clarity Grade **VS 1**
Table **62%**
Crown **13.5%**
Pavilion **52%**
Depth **69.8%**
Girdle **Medium to Slightly Thick**
Culet **Pointed**
Polish **EXCELLENT**
Symmetry **EXCELLENT**
Fluorescence **NONE**
Inscription(s) **IGI LG780612300**
Comments: This Laboratory Grown Diamond was created by Chemical Vapor Deposition (CVD) growth process.