



ELECTRONIC COPY

LG780611161
Report verification at igi.org



March 10, 2026
IGI Report Number **LG780611161**
Description **LABORATORY GROWN DIAMOND**
Shape and Cutting Style **CUSHION MODIFIED BRILLIANT**
Measurements **9.41 X 7.50 X 5.20 MM**
GRADING RESULTS
Carat Weight **3.59 CARATS**
Color Grade **FANCY VIVID GREEN**
Clarity Grade **INTERNALLY FLAWLESS**

March 10, 2026
IGI Report Number **LG780611161**
Description **LABORATORY GROWN DIAMOND**
Shape and Cutting Style **CUSHION MODIFIED BRILLIANT**
Measurements **9.41 X 7.50 X 5.20 MM**

GRADING RESULTS

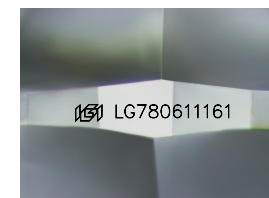
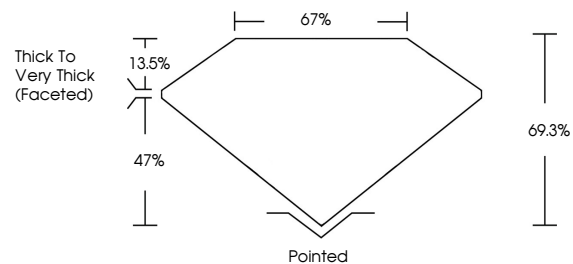
Carat Weight **3.59 CARATS**
Color Grade **FANCY VIVID GREEN**
Clarity Grade **INTERNALLY FLAWLESS**

ADDITIONAL GRADING INFORMATION

Polish **EXCELLENT**
Symmetry **EXCELLENT**
Fluorescence **NONE**
Inscription(s) **LG780611161**

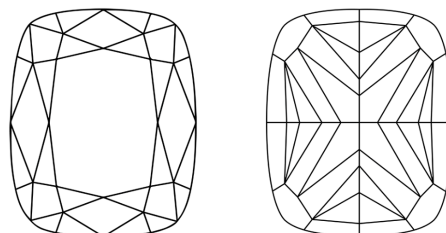
Comments: This Laboratory Grown Diamond was created by High Pressure High Temperature (HPHT) growth process.
Indications of post-growth treatment.

PROPORTIONS



Sample Image Used

CLARITY CHARACTERISTICS



KEY TO SYMBOLS

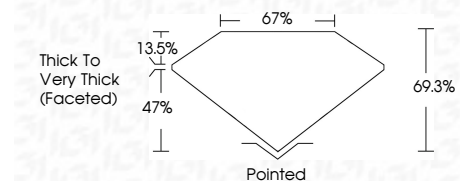
Red symbols indicate internal characteristics.
Green symbols indicate external characteristics.

COLOR

D E F G H I J Faint Very Light Light

CLARITY

FL	IF	VS ¹⁻²	VS ¹⁻²	SI ¹⁻²	I ¹⁻³
Flawless	Internally Flawless	Very Very Slightly Included	Very Slightly Included	Slightly Included	Included



ADDITIONAL GRADING INFORMATION

Polish **EXCELLENT**
Symmetry **EXCELLENT**
Fluorescence **NONE**
Inscription(s) **LG780611161**
Comments: This Laboratory Grown Diamond was created by High Pressure High Temperature (HPHT) growth process.
Indications of post-growth treatment.



IGI



March 10, 2026
IGI Report No **LG780611161**
CUSHION MODIFIED BRILLIANT
9.41 X 7.50 X 5.20 MM
3.59 CARATS
FANCY VIVID GREEN
Color Grade
Clarity Grade
Depth
Table
Girdle
Thick to Very Thick (Faceted)
69.3%
67%
Pointed
EXCELLENT
EXCELLENT
NONE
None
 LG780611161

Comments: This Laboratory Grown Diamond was created by High Pressure High Temperature (HPHT) growth process.
Indications of post-growth treatment.