



LABORATORY GROWN DIAMOND REPORT

March 25, 2026
 IGI Report Number **LG780609347**
 Description **LABORATORY GROWN DIAMOND**
 Shape and Cutting Style **OVAL BRILLIANT**
 Measurements **7.06 X 5.13 X 3.12 MM**

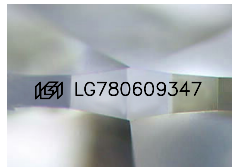
GRADING RESULTS

Carat Weight **0.74 CARAT**
 Color Grade **FANCY INTENSE YELLOW**
 Clarity Grade **VVS 2**

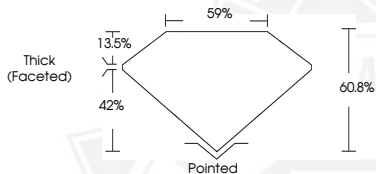
ADDITIONAL GRADING INFORMATION

Polish **VERY GOOD**
 Symmetry **VERY GOOD**
 Fluorescence **NONE**
 Inscription(s) **IGI LG780609347**

Comments: This Laboratory Grown Diamond was created by Chemical Vapor Deposition (CVD) growth process.



Sample Image Used



March 25, 2026
 IGI Report Number **LG780609347**
OVAL BRILLIANT
LABORATORY GROWN DIAMOND
7.06 X 5.13 X 3.12 MM
 Carat Weight **0.74 CARAT**
 Color Grade **FANCY INTENSE YELLOW**
 Clarity Grade **VVS 2**
 Polish **VERY GOOD**
 Symmetry **VERY GOOD**
 Fluorescence **NONE**
 Inscription(s) **IGI LG780609347**
 Comments: This Laboratory Grown Diamond was created by Chemical Vapor Deposition (CVD) growth process.



March 25, 2026
 IGI Report Number **LG780609347**
OVAL BRILLIANT
LABORATORY GROWN DIAMOND
7.06 X 5.13 X 3.12 MM
 Carat Weight **0.74 CARAT**
 Color Grade **FANCY INTENSE YELLOW**
 Clarity Grade **VVS 2**
 Polish **VERY GOOD**
 Symmetry **VERY GOOD**
 Fluorescence **NONE**
 Inscription(s) **IGI LG780609347**
 Comments: This Laboratory Grown Diamond was created by Chemical Vapor Deposition (CVD) growth process.



THIS DOCUMENT WAS PRODUCED WITH THE FOLLOWING SECURITY MEASURES: SPECIAL DOCUMENT PAPER, INK SCREENS, WATERMARK, BACKGROUND DESIGNS, HOLOGRAM AND OTHER SECURITY FEATURES NOT LISTED AND DO EXCEED DOCUMENT SECURITY INDUSTRY GUIDELINES.