



ELECTRONIC COPY

LG780608066 Report verification at igi.org



March 7, 2026 IGI Report Number LG780608066 Description LABORATORY GROWN DIAMOND Shape and Cutting Style CUT CORNERED RECTANGULAR MODIFIED BRILLIANT Measurements 8.91 X 6.10 X 4.00 MM GRADING RESULTS Carat Weight 1.89 CARAT Color Grade D Clarity Grade VS 1

LABORATORY GROWN DIAMOND REPORT

March 7, 2026 IGI Report Number LG780608066 Description LABORATORY GROWN DIAMOND Shape and Cutting Style CUT CORNERED RECTANGULAR MODIFIED BRILLIANT Measurements 8.91 X 6.10 X 4.00 MM

GRADING RESULTS

Carat Weight 1.89 CARAT Color Grade D Clarity Grade VS 1

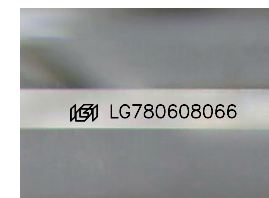
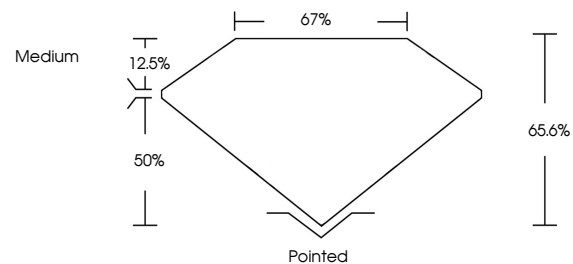
ADDITIONAL GRADING INFORMATION

Polish EXCELLENT Symmetry EXCELLENT Fluorescence NONE

Inscription(s) IGI LG780608066

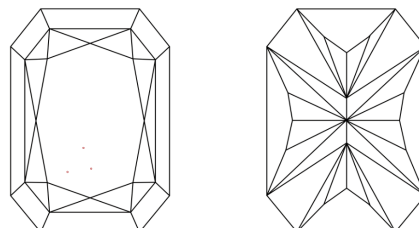
Comments: This Laboratory Grown Diamond was created by Chemical Vapor Deposition (CVD) growth process. Type IIa

PROPORTIONS



Sample Image Used

CLARITY CHARACTERISTICS



KEY TO SYMBOLS

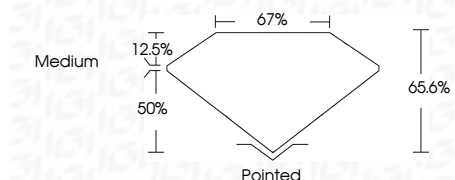
Red symbols indicate internal characteristics. Green symbols indicate external characteristics.

COLOR

D E F G H I J Faint Very Light Light

CLARITY

FL IF VS 1-2 VS 2-3 SI 1-2 I 1-3 Flawless Internally Flawless Very Very Slightly Included Very Slightly Included Slightly Included Included



ADDITIONAL GRADING INFORMATION

Polish EXCELLENT Symmetry EXCELLENT Fluorescence NONE Inscription(s) IGI LG780608066 Comments: This Laboratory Grown Diamond was created by Chemical Vapor Deposition (CVD) growth process. Type IIa



IGI



March 7, 2026 IGI Report No LG780608066 CUT CORNERED RECT. MODIFIED BRILLIANT 1.89 CARAT D VS 1 65.6% 67% Medium Pointed EXCELLENT EXCELLENT NONE NONE IGI LG780608066

Comments: This Laboratory Grown Diamond was created by Chemical Vapor Deposition (CVD) growth process. Type IIa