



March 12, 2026

IGI Report Number **LG780607683**

PEAR ROSE CUT

LABORATORY GROWN DIAMOND

7.87 X 5.64 X 2.51 MM

Carat Weight **0.72 CARAT**

Color Grade **FANCY VIVID BLUE**

Clarity Grade **VS 1**

Polish **VERY GOOD**

Symmetry **VERY GOOD**

Fluorescence **NONE**

Inscription(s) **IGI LG780607683**

Comments: This Laboratory Grown Diamond was created by Chemical Vapor Deposition (CVD) growth process. Indications of post-growth treatment.

LABORATORY GROWN DIAMOND REPORT

March 12, 2026

IGI Report Number

LG780607683

Description

LABORATORY GROWN DIAMOND

Shape and Cutting Style

PEAR ROSE CUT

Measurements

7.87 X 5.64 X 2.51 MM

GRADING RESULTS

Carat Weight

0.72 CARAT

Color Grade

FANCY VIVID BLUE

Clarity Grade

VS 1

ADDITIONAL GRADING INFORMATION

Polish

VERY GOOD

Symmetry

VERY GOOD

Fluorescence

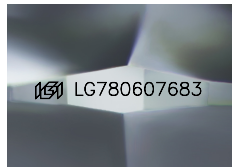
NONE

Inscription(s)

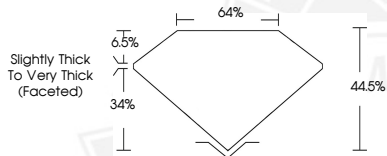
IGI LG780607683

Comments: This Laboratory Grown Diamond was created by Chemical Vapor Deposition (CVD) growth process.

Indications of post-growth treatment.



Sample Image Used



March 12, 2026

IGI Report Number **LG780607683**

PEAR ROSE CUT

LABORATORY GROWN DIAMOND

7.87 X 5.64 X 2.51 MM

Carat Weight **0.72 CARAT**

Color Grade **FANCY VIVID BLUE**

Clarity Grade **VS 1**

Polish **VERY GOOD**

Symmetry **VERY GOOD**

Fluorescence **NONE**

Inscription(s) **IGI LG780607683**

Comments: This Laboratory Grown Diamond was created by Chemical Vapor Deposition (CVD) growth process. Indications of post-growth treatment.



THIS DOCUMENT WAS PRODUCED WITH THE FOLLOWING SECURITY MEASURES: SPECIAL DOCUMENT PAPER, INK SCREENS, WATERMARK, BACKGROUND DESIGNS, HOLOGRAM AND OTHER SECURITY FEATURES NOT LISTED AND DO EXCEED DOCUMENT SECURITY INDUSTRY GUIDELINES.