



**ELECTRONIC COPY**

LG780602460  
Report verification at [igi.org](http://igi.org)



March 7, 2026

IGI Report Number **LG780602460**

Description **LABORATORY GROWN DIAMOND**

Shape and Cutting Style **EMERALD CUT**

Measurements **11.11 X 7.16 X 4.52 MM**

**GRADING RESULTS**

Carat Weight **3.56 CARATS**

Color Grade **FANCY INTENSE PINK**

Clarity Grade **VS 1**

March 7, 2026  
IGI Report Number **LG780602460**  
Description **LABORATORY GROWN DIAMOND**  
Shape and Cutting Style **EMERALD CUT**  
Measurements **11.11 X 7.16 X 4.52 MM**

**GRADING RESULTS**

Carat Weight **3.56 CARATS**

Color Grade **FANCY INTENSE PINK**

Clarity Grade **VS 1**

**ADDITIONAL GRADING INFORMATION**

Polish **EXCELLENT**

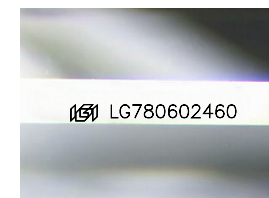
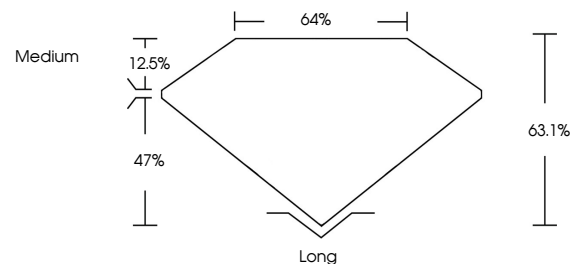
Symmetry **EXCELLENT**

Fluorescence **SLIGHT**

Inscription(s) **LG780602460**

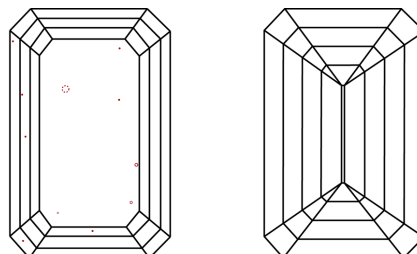
Comments: This Laboratory Grown Diamond was created by Chemical Vapor Deposition (CVD) growth process.  
Indications of post-growth treatment.

**PROPORTIONS**



Sample Image Used

**CLARITY CHARACTERISTICS**



**KEY TO SYMBOLS**

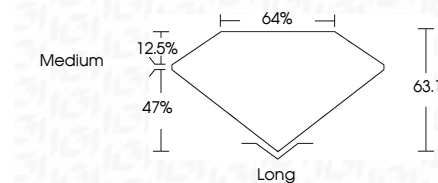
Red symbols indicate internal characteristics.  
Green symbols indicate external characteristics.

**COLOR**

D E F G H I J Faint Very Light Light

**CLARITY**

FL	IF	VS <sup>1-2</sup>	VS <sup>1-2</sup>	SI <sup>1-2</sup>	I <sup>1-3</sup>
Flawless	Internally Flawless	Very Very Slightly Included	Very Slightly Included	Slightly Included	Included



**ADDITIONAL GRADING INFORMATION**

Polish **EXCELLENT**

Symmetry **EXCELLENT**

Fluorescence **SLIGHT**

Inscription(s) **LG780602460**

Comments: This Laboratory Grown Diamond was created by Chemical Vapor Deposition (CVD) growth process.  
Indications of post-growth treatment.



**IGI**



March 7, 2026  
IGI Report No **LG780602460**  
**EMERALD CUT**  
11.11 X 7.16 X 4.52 MM  
3.56 CARATS  
FANCY INTENSE PINK  
VS 1  
63.1%  
47%  
Medium  
Long  
EXCELLENT  
EXCELLENT  
SLIGHT  
 **LG780602460**  
Comments: This Laboratory Grown Diamond was created by Chemical Vapor Deposition (CVD) growth process.  
Indications of post-growth treatment.