



**ELECTRONIC COPY**

LG779667596  
Report verification at igi.org



March 10, 2026

IGI Report Number **LG779667596**

Description **LABORATORY GROWN DIAMOND**

Shape and Cutting Style **ROUND BRILLIANT**

Measurements **7.11 - 7.16 X 4.48 MM**

**GRADING RESULTS**

Carat Weight **1.41 CARAT**

Color Grade **D**

Clarity Grade **VS 1**

Cut Grade **EXCELLENT**

March 10, 2026  
IGI Report Number **LG779667596**  
Description **LABORATORY GROWN DIAMOND**  
Shape and Cutting Style **ROUND BRILLIANT**  
Measurements **7.11 - 7.16 X 4.48 MM**

**GRADING RESULTS**

Carat Weight **1.41 CARAT**

Color Grade **D**

Clarity Grade **VS 1**

Cut Grade **EXCELLENT**

**ADDITIONAL GRADING INFORMATION**

Polish **EXCELLENT**

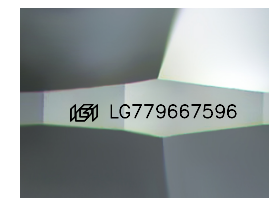
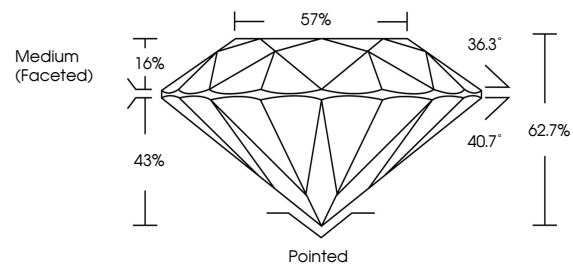
Symmetry **EXCELLENT**

Fluorescence **NONE**

Inscription(s) **IGI LG779667596**

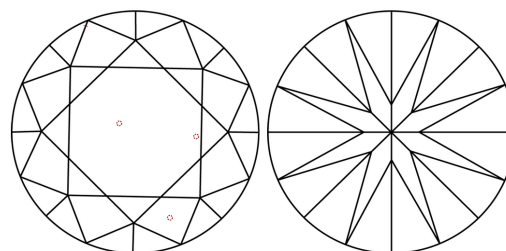
Comments: This Laboratory Grown Diamond was created by Chemical Vapor Deposition (CVD) growth process.  
Type IIa

**PROPORTIONS**



Sample Image Used

**CLARITY CHARACTERISTICS**



**KEY TO SYMBOLS**

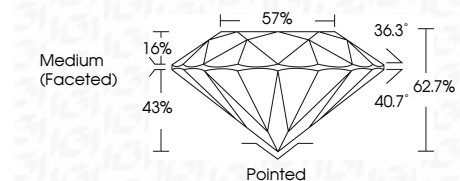
Red symbols indicate internal characteristics.  
Green symbols indicate external characteristics.

**COLOR**

D E F G H I J Faint Very Light Light

**CLARITY**

FL	IF	VS <sup>1-2</sup>	VS <sup>1-2</sup>	SI <sup>1-2</sup>	I <sup>1-3</sup>
Flawless	Internally Flawless	Very Very Slightly Included	Very Slightly Included	Slightly Included	Included



**ADDITIONAL GRADING INFORMATION**

Polish **EXCELLENT**

Symmetry **EXCELLENT**

Fluorescence **NONE**

Inscription(s) **IGI LG779667596**

Comments: This Laboratory Grown Diamond was created by Chemical Vapor Deposition (CVD) growth process.  
Type IIa



**IGI**



March 10, 2026	IGI Report No LG779667596	ROUND BRILLIANT
7.11 - 7.16 X 4.48 MM	1.41 CARAT	D
Color Grade	EXCELLENT	VS 1
Clarity Grade	EXCELLENT	62.7%
Depth	57%	Medium (Faceted)
Table	Pointed	EXCELLENT
Girdle	Symmetry	EXCELLENT
Culet	Fluorescence	NONE
Polish	Inscription(s)	IGI LG779667596

Comments: This Laboratory Grown Diamond was created by Chemical Vapor Deposition (CVD) growth process.  
Type IIa