



ELECTRONIC COPY

LG779661823
Report verification at igi.org

LABORATORY GROWN DIAMOND REPORT

March 12, 2026
IGI Report Number **LG779661823**
Description **LABORATORY GROWN DIAMOND**
Shape and Cutting Style **CUT CORNERED RECTANGULAR MODIFIED BRILLIANT**
Measurements **10.57 X 7.83 X 5.25 MM**

GRADING RESULTS

Carat Weight **3.83 CARATS**
Color Grade **D**
Clarity Grade **VS 1**

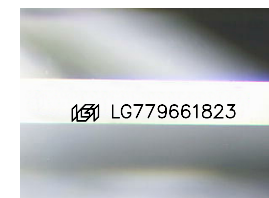
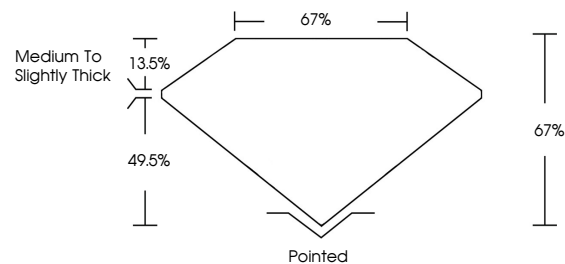
ADDITIONAL GRADING INFORMATION

Polish **EXCELLENT**
Symmetry **EXCELLENT**
Fluorescence **NONE**

Inscription(s) **IGI LG779661823**

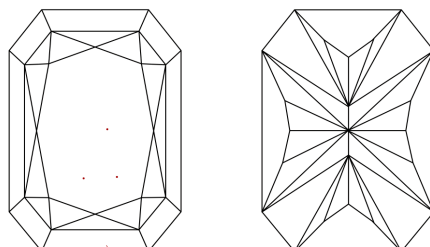
Comments: This Laboratory Grown Diamond was created by Chemical Vapor Deposition (CVD) growth process.
Type IIa

PROPORTIONS



Sample Image Used

CLARITY CHARACTERISTICS



KEY TO SYMBOLS

Red symbols indicate internal characteristics.
Green symbols indicate external characteristics.

COLOR

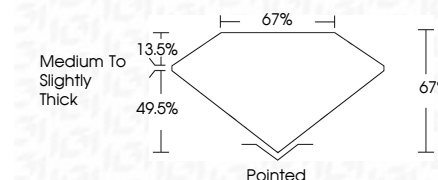
D E F G H I J Faint Very Light Light

CLARITY

FL	IF	VS ¹⁻²	VS ¹⁻²	SI ¹⁻²	I ¹⁻³
Flawless	Internally Flawless	Very Very Slightly Included	Very Slightly Included	Slightly Included	Included



March 12, 2026
IGI Report Number **LG779661823**
Description **LABORATORY GROWN DIAMOND**
Shape and Cutting Style **CUT CORNERED RECTANGULAR MODIFIED BRILLIANT**
Measurements **10.57 X 7.83 X 5.25 MM**
GRADING RESULTS
Carat Weight **3.83 CARATS**
Color Grade **D**
Clarity Grade **VS 1**



ADDITIONAL GRADING INFORMATION

Polish **EXCELLENT**
Symmetry **EXCELLENT**
Fluorescence **NONE**
Inscription(s) **IGI LG779661823**
Comments: This Laboratory Grown Diamond was created by Chemical Vapor Deposition (CVD) growth process.
Type IIa



IGI



March 12, 2026
IGI Report No LG779661823
CUT CORNERED RECT. MODIFIED BRILLIANT
10.57 X 7.83 X 5.25 MM
3.83 CARATS
D
VS 1
67%
67%
Medium to Slightly Thick
Pointed
EXCELLENT
EXCELLENT
NONE
IGI LG779661823

Comments: This Laboratory Grown Diamond was created by Chemical Vapor Deposition (CVD) growth process.
Type IIa