



**ELECTRONIC COPY**

LG779660367  
Report verification at igi.org



March 5, 2026

IGI Report Number **LG779660367**

Description **LABORATORY GROWN DIAMOND**

Shape and Cutting Style **EMERALD CUT**

Measurements **9.76 X 6.90 X 4.74 MM**

**GRADING RESULTS**

Carat Weight **3.10 CARATS**

Color Grade **FANCY INTENSE PINK**

Clarity Grade **VVS 2**

March 5, 2026  
IGI Report Number **LG779660367**  
Description **LABORATORY GROWN DIAMOND**  
Shape and Cutting Style **EMERALD CUT**  
Measurements **9.76 X 6.90 X 4.74 MM**

**GRADING RESULTS**

Carat Weight **3.10 CARATS**

Color Grade **FANCY INTENSE PINK**

Clarity Grade **VVS 2**

**ADDITIONAL GRADING INFORMATION**

Polish **EXCELLENT**

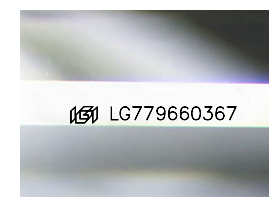
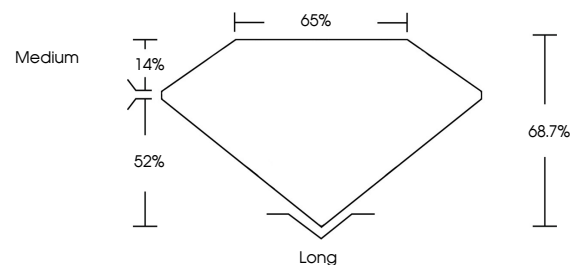
Symmetry **EXCELLENT**

Fluorescence **SLIGHT**

Inscription(s) **IGI LG779660367**

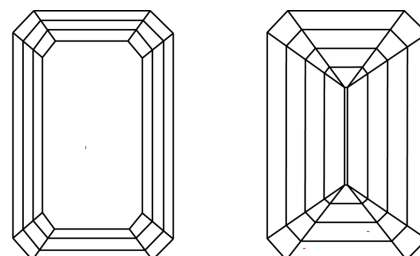
Comments: This Laboratory Grown Diamond was created by Chemical Vapor Deposition (CVD) growth process. Indications of post-growth treatment.

**PROPORTIONS**



Sample Image Used

**CLARITY CHARACTERISTICS**



**KEY TO SYMBOLS**

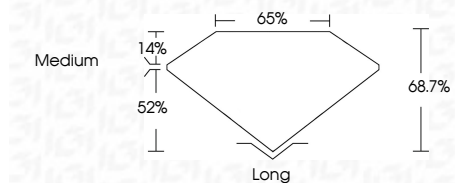
Red symbols indicate internal characteristics.  
Green symbols indicate external characteristics.

**COLOR**

D E F G H I J Faint Very Light Light

**CLARITY**

FL	IF	VVS <sup>1-2</sup>	VS <sup>1-2</sup>	SI <sup>1-2</sup>	I <sup>1-3</sup>
Flawless	Internally Flawless	Very Very Slightly Included	Very Slightly Included	Slightly Included	Included



**ADDITIONAL GRADING INFORMATION**

Polish **EXCELLENT**

Symmetry **EXCELLENT**

Fluorescence **SLIGHT**

Inscription(s) **IGI LG779660367**

Comments: This Laboratory Grown Diamond was created by Chemical Vapor Deposition (CVD) growth process. Indications of post-growth treatment.



March 5, 2026  
IGI Report No LG779660367  
**EMERALD CUT**  
3.10 CARATS  
FANCY INTENSE PINK  
VVS 2  
68.7%  
65%  
Medium  
Long  
EXCELLENT  
EXCELLENT  
SLIGHT  
IGI LG779660367

Comments: This Laboratory Grown Diamond was created by Chemical Vapor Deposition (CVD) growth process. Indications of post-growth treatment.