



March 18, 2026

IGI Report Number **LG779657334**

**MARQUISE BRILLIANT**

**LABORATORY GROWN DIAMOND**

**9.60 X 4.84 X 3.00 MM**

Carat Weight **0.80 CARAT**

Color Grade **E**

Clarity Grade **VS 2**

Polish **EXCELLENT**

Symmetry **EXCELLENT**

Fluorescence **NONE**

Inscription(s) **IGI LG779657334**

Comments: This Laboratory Grown Diamond was created by Chemical Vapor Deposition (CVD) growth process. Type IIa

**LABORATORY GROWN DIAMOND REPORT**

March 18, 2026

IGI Report Number

**LG779657334**

Description

**LABORATORY GROWN DIAMOND**

Shape and Cutting Style

**MARQUISE BRILLIANT**

Measurements

**9.60 X 4.84 X 3.00 MM**

**GRADING RESULTS**

Carat Weight

**0.80 CARAT**

Color Grade

**E**

Clarity Grade

**VS 2**

**ADDITIONAL GRADING INFORMATION**

Polish

**EXCELLENT**

Symmetry

**EXCELLENT**

Fluorescence

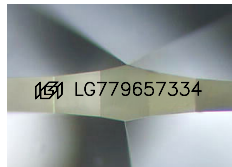
**NONE**

Inscription(s)

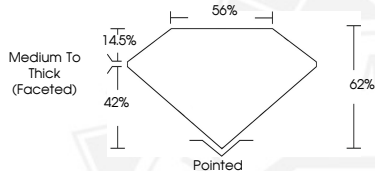
**IGI LG779657334**

Comments: This Laboratory Grown Diamond was created by Chemical Vapor Deposition (CVD) growth process.

Type IIa



Sample Image Used



March 18, 2026

IGI Report Number **LG779657334**

**MARQUISE BRILLIANT**

**LABORATORY GROWN DIAMOND**

**9.60 X 4.84 X 3.00 MM**

Carat Weight **0.80 CARAT**

Color Grade **E**

Clarity Grade **VS 2**

Polish **EXCELLENT**

Symmetry **EXCELLENT**

Fluorescence **NONE**

Inscription(s) **IGI LG779657334**

Comments: This Laboratory Grown Diamond was created by Chemical Vapor Deposition (CVD) growth process. Type IIa



THIS DOCUMENT WAS PRODUCED WITH THE FOLLOWING SECURITY MEASURES: SPECIAL DOCUMENT PAPER, INK SCREENS, WATERMARK, BACKGROUND DESIGNS, HOLOGRAM AND OTHER SECURITY FEATURES NOT LISTED AND DO EXCEED DOCUMENT SECURITY INDUSTRY GUIDELINES.