



March 4, 2026

IGI Report Number **LG779655442**

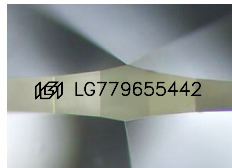
**MARQUISE BRILLIANT
LABORATORY GROWN DIAMOND**
9.84 X 5.03 X 3.23 MM

| | |
|----------------|------------------------|
| Carat Weight | 0.93 CARAT |
| Color Grade | D |
| Clarity Grade | VVS 2 |
| Polish | EXCELLENT |
| Symmetry | EXCELLENT |
| Fluorescence | NONE |
| Inscription(s) | IGI LG779655442 |

Comments: This Laboratory Grown Diamond was created by Chemical Vapor Deposition (CVD) growth process. Type IIa

LABORATORY GROWN DIAMOND REPORT

| | |
|-------------------------|---------------------------------|
| March 4, 2026 | |
| IGI Report Number | LG779655442 |
| Description | LABORATORY GROWN DIAMOND |
| Shape and Cutting Style | MARQUISE BRILLIANT |
| Measurements | 9.84 X 5.03 X 3.23 MM |



Sample Image Used

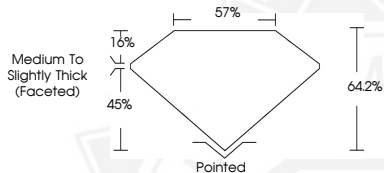
GRADING RESULTS

| | |
|---------------|-------------------|
| Carat Weight | 0.93 CARAT |
| Color Grade | D |
| Clarity Grade | VVS 2 |

ADDITIONAL GRADING INFORMATION

| | |
|----------------|------------------------|
| Polish | EXCELLENT |
| Symmetry | EXCELLENT |
| Fluorescence | NONE |
| Inscription(s) | IGI LG779655442 |

Comments: This Laboratory Grown Diamond was created by Chemical Vapor Deposition (CVD) growth process. Type IIa



March 4, 2026

IGI Report Number **LG779655442**

**MARQUISE BRILLIANT
LABORATORY GROWN DIAMOND**
9.84 X 5.03 X 3.23 MM

| | |
|----------------|------------------------|
| Carat Weight | 0.93 CARAT |
| Color Grade | D |
| Clarity Grade | VVS 2 |
| Polish | EXCELLENT |
| Symmetry | EXCELLENT |
| Fluorescence | NONE |
| Inscription(s) | IGI LG779655442 |

Comments: This Laboratory Grown Diamond was created by Chemical Vapor Deposition (CVD) growth process. Type IIa



THIS DOCUMENT WAS PRODUCED WITH THE FOLLOWING SECURITY MEASURES: SPECIAL DOCUMENT PAPER, INK SCREENS, WATERMARK, BACKGROUND DESIGNS, HOLOGRAM AND OTHER SECURITY FEATURES NOT LISTED AND DO EXCEED DOCUMENT SECURITY INDUSTRY GUIDELINES.