



ELECTRONIC COPY

LG779651108
Report verification at igi.org



March 2, 2026
IGI Report Number LG779651108
Description LABORATORY GROWN DIAMOND
Shape and Cutting Style ROUND BRILLIANT
Measurements 8.04 - 8.09 X 5.11 MM
GRADING RESULTS
Carat Weight 2.07 CARATS
Color Grade D
Clarity Grade VVS 2
Cut Grade EXCELLENT

March 2, 2026
IGI Report Number LG779651108
Description LABORATORY GROWN DIAMOND
Shape and Cutting Style ROUND BRILLIANT
Measurements 8.04 - 8.09 X 5.11 MM

GRADING RESULTS

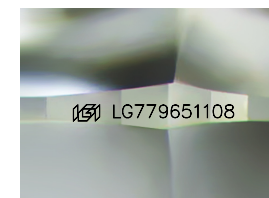
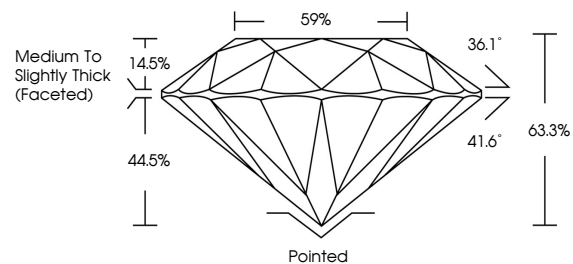
Carat Weight 2.07 CARATS
Color Grade D
Clarity Grade VVS 2
Cut Grade EXCELLENT

ADDITIONAL GRADING INFORMATION

Polish EXCELLENT
Symmetry EXCELLENT
Fluorescence NONE
Inscription(s) IGI LG779651108

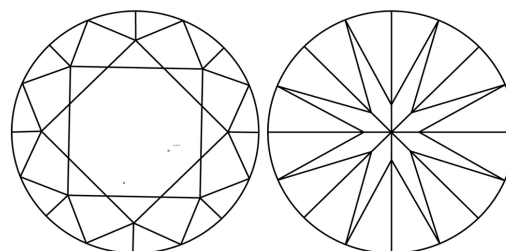
Comments: This Laboratory Grown Diamond was created by Chemical Vapor Deposition (CVD) growth process. Type IIa

PROPORTIONS



Sample Image Used

CLARITY CHARACTERISTICS



KEY TO SYMBOLS

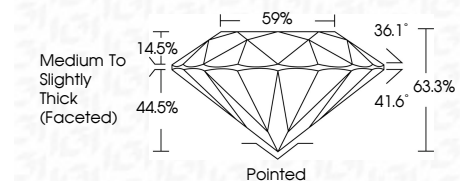
Red symbols indicate internal characteristics.
Green symbols indicate external characteristics.

COLOR

D E F G H I J Faint Very Light Light

CLARITY

FL IF VVS 1-2 VS 1-2 SI 1-2 I 1-3
Flawless Internally Flawless Very Very Slightly Included Very Slightly Included Slightly Included Included



ADDITIONAL GRADING INFORMATION

Polish EXCELLENT
Symmetry EXCELLENT
Fluorescence NONE
Inscription(s) IGI LG779651108
Comments: This Laboratory Grown Diamond was created by Chemical Vapor Deposition (CVD) growth process. Type IIa



March 2, 2026
IGI Report No LG779651108
ROUND BRILLIANT
8.04 - 8.09 X 5.11 MM
2.07 CARATS
Color Grade D
Clarity Grade VVS 2
Depth 63.3%
Table 59%
Girdle Medium To Slightly Thick (Faceted)
Culet Pointed
Polish EXCELLENT
Symmetry EXCELLENT
Fluorescence NONE
Inscriptions(s) IGI LG779651108
Comments: This Laboratory Grown Diamond was created by Chemical Vapor Deposition (CVD) growth process. Type IIa