



**ELECTRONIC COPY**

LG779649850  
Report verification at igi.org



March 10, 2026

IGI Report Number **LG779649850**

Description **LABORATORY GROWN DIAMOND**

Shape and Cutting Style **ROUND BRILLIANT**

Measurements **7.31 - 7.35 X 4.58 MM**

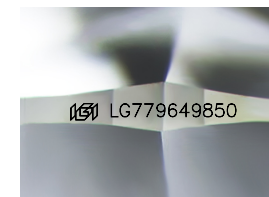
**GRADING RESULTS**

Carat Weight **1.52 CARAT**

Color Grade **D**

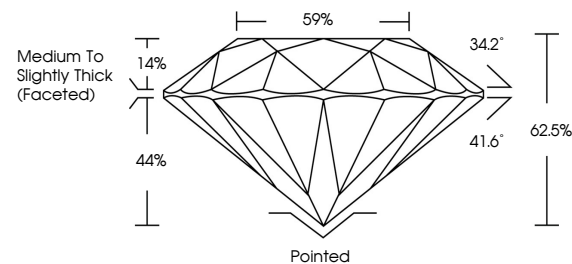
Clarity Grade **VVS 2**

Cut Grade **EXCELLENT**

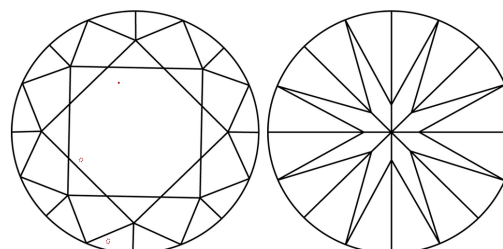


Sample Image Used

**PROPORTIONS**



**CLARITY CHARACTERISTICS**



**KEY TO SYMBOLS**

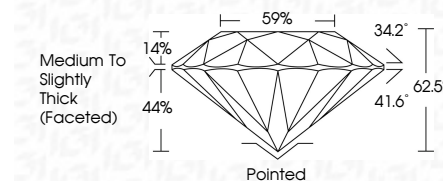
Red symbols indicate internal characteristics.  
Green symbols indicate external characteristics.

**COLOR**

D E F G H I J Faint Very Light Light

**CLARITY**

| FL       | IF                  | VVS <sup>1-2</sup>          | VS <sup>1-2</sup>      | SI <sup>1-2</sup> | I <sup>1-3</sup> |
|----------|---------------------|-----------------------------|------------------------|-------------------|------------------|
| Flawless | Internally Flawless | Very Very Slightly Included | Very Slightly Included | Slightly Included | Included         |



**ADDITIONAL GRADING INFORMATION**

Polish **EXCELLENT**

Symmetry **EXCELLENT**

Fluorescence **NONE**

Inscription(s) **(IGI) LG779649850**

Comments: This Laboratory Grown Diamond was created by Chemical Vapor Deposition (CVD) growth process. Type IIa



**IGI**



March 10, 2026  
IGI Report No LG779649850  
ROUND BRILLIANT

1.52 CARAT  
Carat Weight  
Color Grade D  
Clarity Grade VVS 2  
Depth 62.5%  
Table 59%  
Girdle Medium To Slightly Thick (Faceted)

Culet Pointed  
Polish EXCELLENT  
Symmetry EXCELLENT  
Fluorescence NONE  
Inscription(s) (IGI) LG779649850

Comments: This Laboratory Grown Diamond was created by Chemical Vapor Deposition (CVD) growth process. Type IIa