



ELECTRONIC COPY

LG779647231
Report verification at igi.org



March 16, 2026

IGI Report Number **LG779647231**

Description **LABORATORY GROWN DIAMOND**

Shape and Cutting Style **OCTAGONAL STEP CUT**

Measurements **10.52 X 7.91 X 5.11 MM**

GRADING RESULTS

Carat Weight **3.78 CARATS**

Color Grade **FANCY INTENSE PINK**

Clarity Grade **VVS 2**

March 16, 2026
IGI Report Number **LG779647231**
Description **LABORATORY GROWN DIAMOND**
Shape and Cutting Style **OCTAGONAL STEP CUT**
Measurements **10.52 X 7.91 X 5.11 MM**

GRADING RESULTS

Carat Weight **3.78 CARATS**

Color Grade **FANCY INTENSE PINK**

Clarity Grade **VVS 2**

ADDITIONAL GRADING INFORMATION

Polish **VERY GOOD**

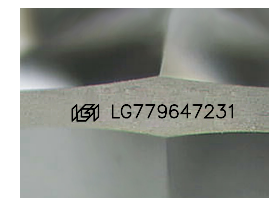
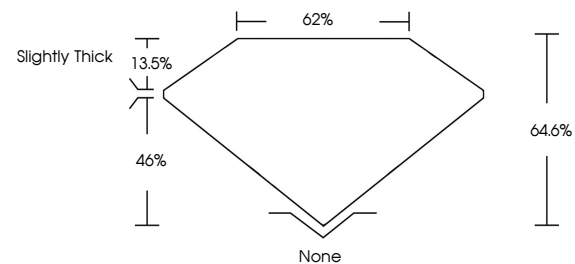
Symmetry **EXCELLENT**

Fluorescence **SLIGHT**

Inscription(s) **IGI LG779647231**

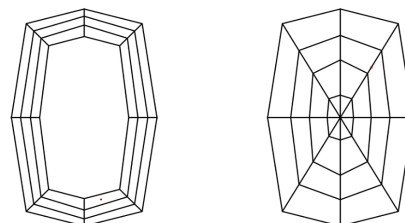
Comments: This Laboratory Grown Diamond was created by Chemical Vapor Deposition (CVD) growth process.
Indications of post-growth treatment.

PROPORTIONS



Sample Image Used

CLARITY CHARACTERISTICS



KEY TO SYMBOLS

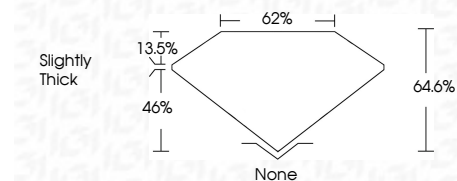
Red symbols indicate internal characteristics.
Green symbols indicate external characteristics.

COLOR

D E F G H I J Faint Very Light Light

CLARITY

FL	IF	VVS ¹⁻²	VS ¹⁻²	SI ¹⁻²	I ¹⁻³
Flawless	Internally Flawless	Very Very Slightly Included	Very Slightly Included	Slightly Included	Included



ADDITIONAL GRADING INFORMATION

Polish **VERY GOOD**

Symmetry **EXCELLENT**

Fluorescence **SLIGHT**

Inscription(s) **IGI LG779647231**

Comments: This Laboratory Grown Diamond was created by Chemical Vapor Deposition (CVD) growth process.
Indications of post-growth treatment.



March 16, 2026
IGI Report No LG779647231
OCTAGONAL STEP CUT
3.78 CARATS
FANCY INTENSE PINK
VVS 2
64.6%
62%
Slightly Thick
None
VERY GOOD
EXCELLENT
SLIGHT
IGI LG779647231

Comments: This Laboratory Grown Diamond was created by Chemical Vapor Deposition (CVD) growth process.
Indications of post-growth treatment.