



ELECTRONIC COPY

LG779647228
Report verification at igi.org



April 16, 2026
IGI Report Number **LG779647228**
Description **LABORATORY GROWN DIAMOND**
Shape and Cutting Style **CUT CORNERED SQUARE STEP CUT**

Measurements **8.98 X 8.91 X 6.12 MM**

GRADING RESULTS
Carat Weight **5.25 CARATS**
Color Grade **D**
Clarity Grade **VVS 2**

April 16, 2026
IGI Report Number **LG779647228**
Description **LABORATORY GROWN DIAMOND**
Shape and Cutting Style **CUT CORNERED SQUARE STEP CUT**
Measurements **8.98 X 8.91 X 6.12 MM**

GRADING RESULTS

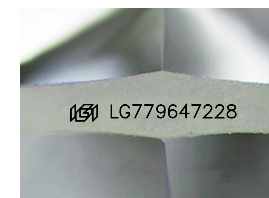
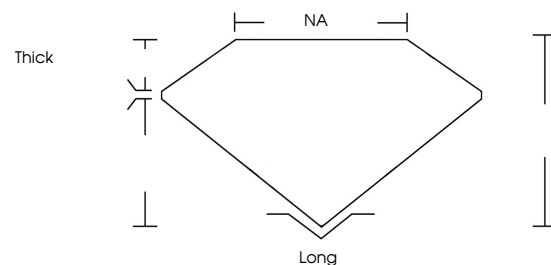
Carat Weight **5.25 CARATS**
Color Grade **D**
Clarity Grade **VVS 2**

ADDITIONAL GRADING INFORMATION

Polish **EXCELLENT**
Symmetry **EXCELLENT**
Fluorescence **NONE**
Inscription(s) **IGI LG779647228**

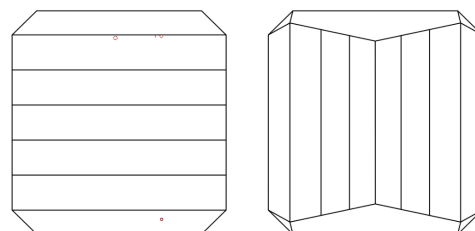
Comments: This Laboratory Grown Diamond was created by Chemical Vapor Deposition (CVD) growth process.
Type IIa

PROPORTIONS



Sample Image Used

CLARITY CHARACTERISTICS



KEY TO SYMBOLS

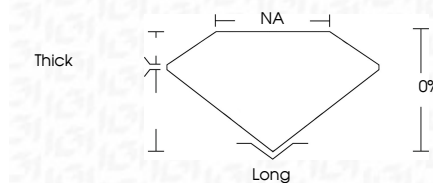
Red symbols indicate internal characteristics.
Green symbols indicate external characteristics.

COLOR

D E F G H I J Faint Very Light Light

CLARITY

FL	IF	VVS ¹⁻²	VS ¹⁻²	SI ¹⁻²	I ¹⁻³
Flawless	Internally Flawless	Very Very Slightly Included	Very Slightly Included	Slightly Included	Included



ADDITIONAL GRADING INFORMATION

Polish **EXCELLENT**
Symmetry **EXCELLENT**
Fluorescence **NONE**
Inscription(s) **IGI LG779647228**
Comments: This Laboratory Grown Diamond was created by Chemical Vapor Deposition (CVD) growth process.
Type IIa



April 16, 2026
IGI Report No LG779647228
CUT CORNERED SQUARE STEP CUT
8.98 X 8.91 X 6.12 MM
5.25 CARATS
D
VVS 2
0%
NA
Thick
Long
EXCELLENT
EXCELLENT
NONE
IGI LG779647228
Comments: This Laboratory Grown Diamond was created by Chemical Vapor Deposition (CVD) growth process.
Type IIa