



ELECTRONIC COPY

LABORATORY GROWN DIAMOND REPORT

March 2, 2026
IGI Report Number LG779644813
Description LABORATORY GROWN DIAMOND
Shape and Cutting Style HEXAGONAL MODIFIED BRILLIANT
Measurements 14.69 X 7.89 X 5.22 MM

GRADING RESULTS

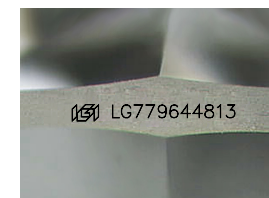
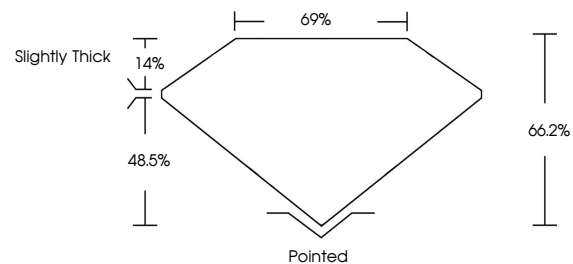
Carat Weight 3.73 CARATS
Color Grade D
Clarity Grade VVS 2

ADDITIONAL GRADING INFORMATION

Polish EXCELLENT
Symmetry EXCELLENT
Fluorescence NONE
Inscription(s) IGI LG779644813

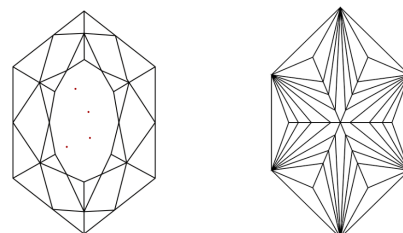
Comments: This Laboratory Grown Diamond was created by Chemical Vapor Deposition (CVD) growth process.
Type IIa

PROPORTIONS



Sample Image Used

CLARITY CHARACTERISTICS



KEY TO SYMBOLS

Red symbols indicate internal characteristics.
Green symbols indicate external characteristics.

COLOR

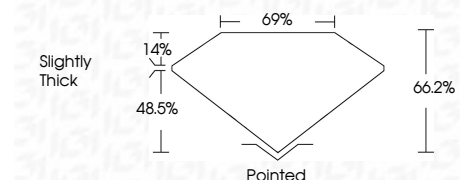
D E F G H I J Faint Very Light Light

CLARITY

FL IF VVS¹⁻² VS¹⁻² SI¹⁻² I¹⁻³
Flawless Internally Flawless Very Very Slightly Included Very Slightly Included Slightly Included Included



March 2, 2026
IGI Report Number LG779644813
Description LABORATORY GROWN DIAMOND
Shape and Cutting Style HEXAGONAL MODIFIED BRILLIANT
Measurements 14.69 X 7.89 X 5.22 MM
GRADING RESULTS
Carat Weight 3.73 CARATS
Color Grade D
Clarity Grade VVS 2



ADDITIONAL GRADING INFORMATION

Polish EXCELLENT
Symmetry EXCELLENT
Fluorescence NONE
Inscription(s) IGI LG779644813
Comments: This Laboratory Grown Diamond was created by Chemical Vapor Deposition (CVD) growth process.
Type IIa



March 2, 2026
IGI Report No LG779644813
HEXAGONAL MODIFIED BRILLIANT
14.69 X 7.89 X 5.22 MM
3.73 CARATS
D
VVS 2
66.2%
69%
Slightly Thick
Pointed
EXCELLENT
EXCELLENT
NONE
IGI LG779644813
Comments: This Laboratory Grown Diamond was created by Chemical Vapor Deposition (CVD) growth process.
Type IIa