



**ELECTRONIC COPY**

LG779639209  
Report verification at igi.org



March 6, 2026  
IGI Report Number **LG779639209**  
Description **LABORATORY GROWN DIAMOND**  
Shape and Cutting Style **SQUARE EMERALD CUT**  
Measurements **9.04 X 8.99 X 6.15 MM**  
**GRADING RESULTS**  
Carat Weight **5.03 CARATS**  
Color Grade **FANCY INTENSE PINK**  
Clarity Grade **VVS 2**

March 6, 2026  
IGI Report Number **LG779639209**  
Description **LABORATORY GROWN DIAMOND**  
Shape and Cutting Style **SQUARE EMERALD CUT**  
Measurements **9.04 X 8.99 X 6.15 MM**

**GRADING RESULTS**

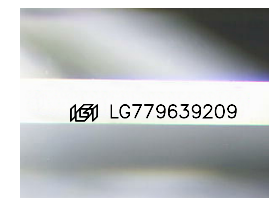
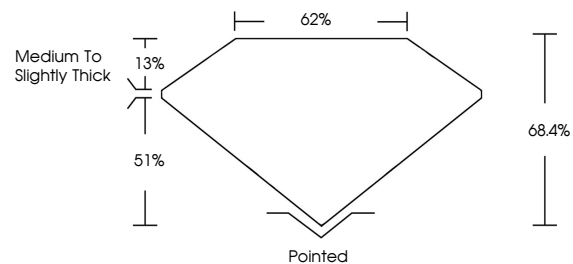
Carat Weight **5.03 CARATS**  
Color Grade **FANCY INTENSE PINK**  
Clarity Grade **VVS 2**

**ADDITIONAL GRADING INFORMATION**

Polish **EXCELLENT**  
Symmetry **EXCELLENT**  
Fluorescence **SLIGHT**  
Inscription(s) **IGI LG779639209**

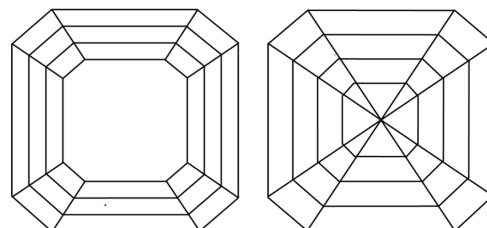
Comments: This Laboratory Grown Diamond was created by Chemical Vapor Deposition (CVD) growth process. Indications of post-growth treatment.

**PROPORTIONS**



Sample Image Used

**CLARITY CHARACTERISTICS**



**KEY TO SYMBOLS**

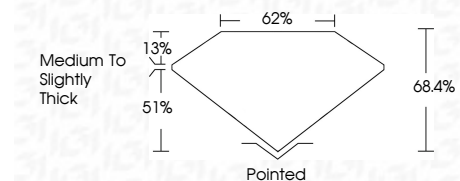
Red symbols indicate internal characteristics.  
Green symbols indicate external characteristics.

**COLOR**

D E F G H I J Faint Very Light Light

**CLARITY**

FL	IF	VVS <sup>1-2</sup>	VS <sup>1-2</sup>	SI <sup>1-2</sup>	I <sup>1-3</sup>
Flawless	Internally Flawless	Very Very Slightly Included	Very Slightly Included	Slightly Included	Included



**ADDITIONAL GRADING INFORMATION**

Polish **EXCELLENT**  
Symmetry **EXCELLENT**  
Fluorescence **SLIGHT**  
Inscription(s) **IGI LG779639209**  
Comments: This Laboratory Grown Diamond was created by Chemical Vapor Deposition (CVD) growth process. Indications of post-growth treatment.



March 6, 2026  
IGI Report No **LG779639209**  
**SQUARE EMERALD CUT**  
9.04 X 8.99 X 6.15 MM  
5.03 CARATS  
FANCY INTENSE PINK  
VVS 2  
68.4%  
62%  
Medium to Slightly Thick  
Pointed  
EXCELLENT  
EXCELLENT  
SLIGHT  
IGI LG779639209  
Comments: This Laboratory Grown Diamond was created by Chemical Vapor Deposition (CVD) growth process. Indications of post-growth treatment.