



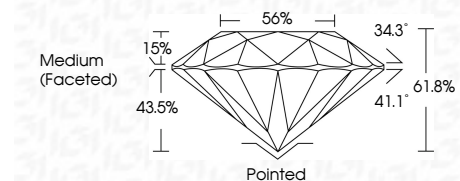
ELECTRONIC COPY

LG779638300 Report verification at igi.org



February 28, 2026 IGI Report Number LG779638300 Description LABORATORY GROWN DIAMOND Shape and Cutting Style ROUND BRILLIANT Measurements 8.21 - 8.22 X 5.08 MM

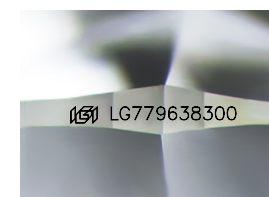
GRADING RESULTS Carat Weight 2.07 CARATS Color Grade D Clarity Grade VVS 2 Cut Grade IDEAL



ADDITIONAL GRADING INFORMATION Polish EXCELLENT Symmetry EXCELLENT Fluorescence NONE Inscription(s) LG779638300 Comments: HEARTS & ARROWS This Laboratory Grown Diamond was created by Chemical Vapor Deposition (CVD) growth process. Type IIa

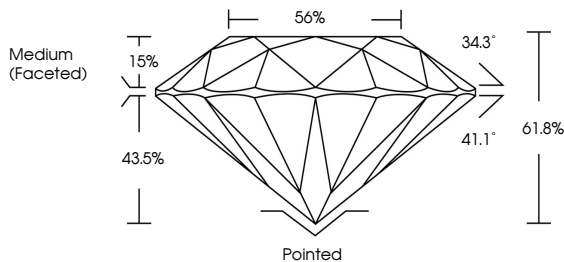


February 28, 2026 IGI Report No LG779638300 ROUND BRILLIANT 8.21 - 8.22 X 5.08 MM 2.07 CARATS D VVS 2 IDEAL 61.8% 56% Medium (Faceted) Pointed EXCELLENT EXCELLENT NONE LG779638300

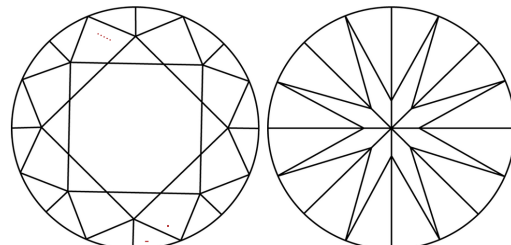


Sample Image Used

PROPORTIONS



CLARITY CHARACTERISTICS



KEY TO SYMBOLS Red symbols indicate internal characteristics. Green symbols indicate external characteristics.



COLOR

Table with color grades: D, E, F, G, H, I, J, Faint, Very Light, Light

CLARITY

Table with clarity grades: FL, IF, VVS 1-2, VS 1-2, SI 1-2, I 1-3, Flawless, Internally Flawless, Very Very Slightly Included, Very Slightly Included, Slightly Included, Included



February 28, 2026 IGI Report Number LG779638300 Description LABORATORY GROWN DIAMOND Shape and Cutting Style ROUND BRILLIANT Measurements 8.21 - 8.22 X 5.08 MM

GRADING RESULTS Carat Weight 2.07 CARATS Color Grade D Clarity Grade VVS 2 Cut Grade IDEAL

ADDITIONAL GRADING INFORMATION Polish EXCELLENT Symmetry EXCELLENT Fluorescence NONE Inscription(s) LG779638300

Comments: HEARTS & ARROWS This Laboratory Grown Diamond was created by Chemical Vapor Deposition (CVD) growth process. Type IIa

