



ELECTRONIC COPY

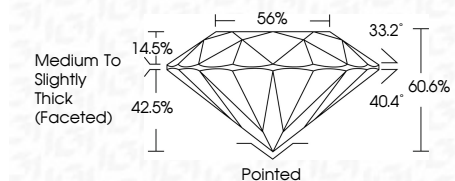
LG779637258 Report verification at igi.org



March 7, 2026 IGI Report Number LG779637258 Description LABORATORY GROWN DIAMOND Shape and Cutting Style ROUND BRILLIANT Measurements 9.33 - 9.37 X 5.67 MM

GRADING RESULTS

Carat Weight 3.05 CARATS Color Grade F Clarity Grade VVS 2 Cut Grade IDEAL



ADDITIONAL GRADING INFORMATION

Polish EXCELLENT Symmetry EXCELLENT Fluorescence NONE Inscription(s) (IGI) LG779637258 Comments: This Laboratory Grown Diamond was created by Chemical Vapor Deposition (CVD) growth process. Type IIa



March 7, 2026 IGI Report No LG779637258 ROUND BRILLIANT 9.33 - 9.37 X 5.67 MM 3.05 CARATS F VVS 2 IDEAL 60.6% 56% Medium To Slightly Thick (Faceted) Pointed EXCELLENT EXCELLENT NONE (IGI) LG779637258 Comments: This Laboratory Grown Diamond was created by Chemical Vapor Deposition (CVD) growth process. Type IIa

March 7, 2026 IGI Report Number LG779637258 Description LABORATORY GROWN DIAMOND Shape and Cutting Style ROUND BRILLIANT Measurements 9.33 - 9.37 X 5.67 MM

GRADING RESULTS

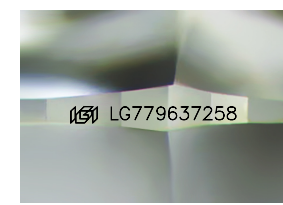
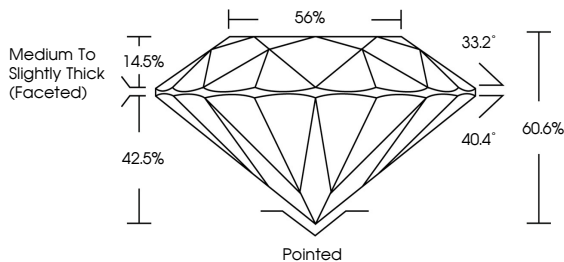
Carat Weight 3.05 CARATS Color Grade F Clarity Grade VVS 2 Cut Grade IDEAL

ADDITIONAL GRADING INFORMATION

Polish EXCELLENT Symmetry EXCELLENT Fluorescence NONE Inscription(s) (IGI) LG779637258

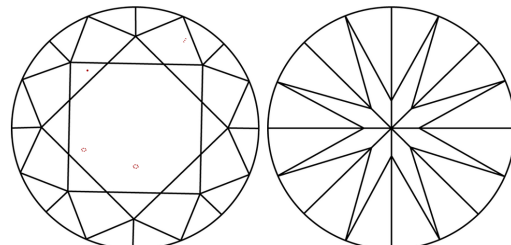
Comments: This Laboratory Grown Diamond was created by Chemical Vapor Deposition (CVD) growth process. Type IIa

PROPORTIONS



Sample Image Used

CLARITY CHARACTERISTICS



KEY TO SYMBOLS

Red symbols indicate internal characteristics. Green symbols indicate external characteristics.

COLOR

D E F G H I J Faint Very Light Light

CLARITY

FL IF VVS 1-2 VS 1-2 SI 1-2 I 1-3 Flawless Internally Flawless Very Very Slightly Included Very Slightly Included Slightly Included Included

