



March 3, 2026

IGI Report Number LG779634469
HEPTAGONAL MODIFIED STEP CUT
LABORATORY GROWN DIAMOND
8.78 X 5.17 X 3.23 MM

Carat Weight **0.96 CARAT**
Color Grade **D**
Clarity Grade **VVS 2**
Polish **EXCELLENT**
Symmetry **EXCELLENT**
Fluorescence **NONE**
Inscription(s) **IGI LG779634469**

Comments: This Laboratory Grown Diamond was created by Chemical Vapor Deposition (CVD) growth process. Type IIa

LABORATORY GROWN DIAMOND REPORT

March 3, 2026
IGI Report Number **LG779634469**
Description **LABORATORY GROWN DIAMOND**
Shape and Cutting Style **HEPTAGONAL MODIFIED STEP CUT**
Measurements **8.78 X 5.17 X 3.23 MM**

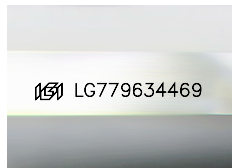
GRADING RESULTS

Carat Weight **0.96 CARAT**
Color Grade **D**
Clarity Grade **VVS 2**

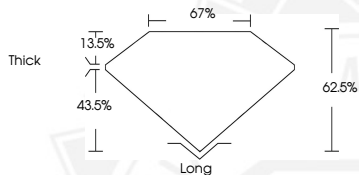
ADDITIONAL GRADING INFORMATION

Polish **EXCELLENT**
Symmetry **EXCELLENT**
Fluorescence **NONE**
Inscription(s) **IGI LG779634469**

Comments: This Laboratory Grown Diamond was created by Chemical Vapor Deposition (CVD) growth process.
Type IIa



Sample Image Used



March 3, 2026

IGI Report Number LG779634469
HEPTAGONAL MODIFIED STEP CUT
LABORATORY GROWN DIAMOND
8.78 X 5.17 X 3.23 MM

Carat Weight **0.96 CARAT**
Color Grade **D**
Clarity Grade **VVS 2**
Polish **EXCELLENT**
Symmetry **EXCELLENT**
Fluorescence **NONE**
Inscription(s) **IGI LG779634469**

Comments: This Laboratory Grown Diamond was created by Chemical Vapor Deposition (CVD) growth process. Type IIa



THIS DOCUMENT WAS PRODUCED WITH THE FOLLOWING SECURITY MEASURES: SPECIAL DOCUMENT PAPER, INK SCREENS, WATERMARK, BACKGROUND DESIGNS, HOLOGRAM AND OTHER SECURITY FEATURES NOT LISTED AND DO EXCEED DOCUMENT SECURITY INDUSTRY GUIDELINES.