



ELECTRONIC COPY

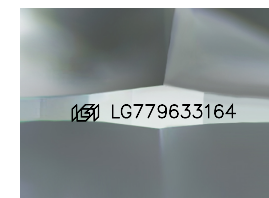
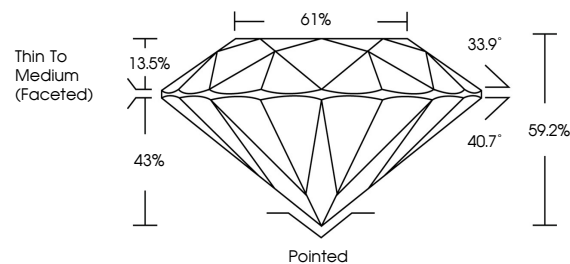
LG779633164
Report verification at igi.org



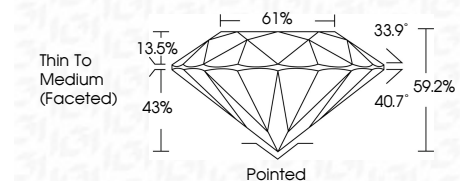
March 8, 2026
IGI Report Number LG779633164
Description LABORATORY GROWN DIAMOND
Shape and Cutting Style ROUND BRILLIANT
Measurements 8.17 - 8.23 X 4.86 MM
GRADING RESULTS
Carat Weight 1.99 CARAT
Color Grade D
Clarity Grade VVS 2
Cut Grade EXCELLENT

March 8, 2026
IGI Report Number LG779633164
Description LABORATORY GROWN DIAMOND
Shape and Cutting Style ROUND BRILLIANT
Measurements 8.17 - 8.23 X 4.86 MM

PROPORTIONS



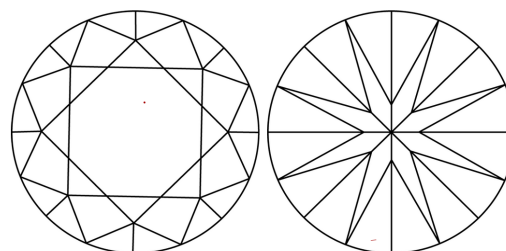
Sample Image Used



GRADING RESULTS

Carat Weight 1.99 CARAT
Color Grade D
Clarity Grade VVS 2
Cut Grade EXCELLENT

CLARITY CHARACTERISTICS



KEY TO SYMBOLS

Red symbols indicate internal characteristics.
Green symbols indicate external characteristics.

ADDITIONAL GRADING INFORMATION

Polish EXCELLENT
Symmetry EXCELLENT
Fluorescence NONE
Inscription(s) IGI LG779633164

ADDITIONAL GRADING INFORMATION

Polish EXCELLENT
Symmetry EXCELLENT
Fluorescence NONE
Inscription(s) IGI LG779633164
Comments: This Laboratory Grown Diamond was created by Chemical Vapor Deposition (CVD) growth process. Type IIa

COLOR

D E F G H I J Faint Very Light Light

CLARITY

FL IF VVS 1-2 VS 1-2 SI 1-2 I 1-3
Flawless Internally Flawless Very Very Slightly Included Very Slightly Included Slightly Included Included



IGI

March 8, 2026
IGI Report No LG779633164
ROUND BRILLIANT
8.17 - 8.23 X 4.86 MM
1.99 CARAT
Color Grade D
Clarity Grade VVS 2
Depth 59.2%
Table 61%
Girdle Thin To Medium (Faceted)
Culet Pointed
Polish EXCELLENT
Symmetry EXCELLENT
Fluorescence NONE
Inscription(s) IGI LG779633164
Comments: This Laboratory Grown Diamond was created by Chemical Vapor Deposition (CVD) growth process. Type IIa