



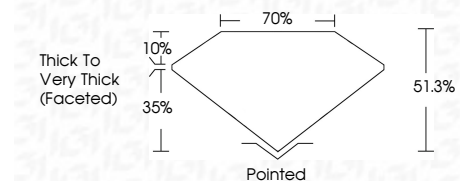
ELECTRONIC COPY

LG779630130
Report verification at igi.org



March 9, 2026
IGI Report Number **LG779630130**
Description **LABORATORY GROWN DIAMOND**
Shape and Cutting Style **HEART MODIFIED BRILLIANT**
Measurements **6.36 X 6.61 X 3.39 MM**

GRADING RESULTS
Carat Weight **1.04 CARAT**
Color Grade **FANCY VIVID PINK**
Clarity Grade **SI 1**



ADDITIONAL GRADING INFORMATION
Polish **EXCELLENT**
Symmetry **EXCELLENT**
Fluorescence **STRONG**
Inscription(s) **IGI LG779630130**
Comments: This Laboratory Grown Diamond was created by Chemical Vapor Deposition (CVD) growth process. Indications of post-growth treatment.



March 9, 2026
IGI Report No **LG779630130**
HEART MODIFIED BRILLIANT
6.36 X 6.61 X 3.39 MM
1.04 CARAT
FANCY VIVID PINK
SI 1
51.3%
70%
Thick to Very Thick (Faceted)
Pointed
EXCELLENT
EXCELLENT
STRONG
IGI LG779630130
Comments: This Laboratory Grown Diamond was created by Chemical Vapor Deposition (CVD) growth process. Indications of post-growth treatment.

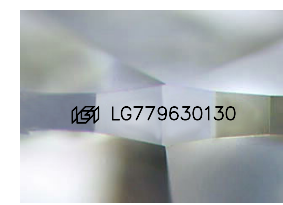
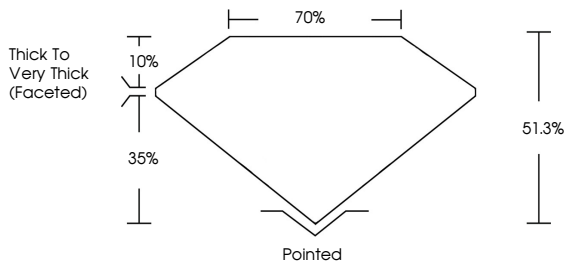
March 9, 2026
IGI Report Number **LG779630130**
Description **LABORATORY GROWN DIAMOND**
Shape and Cutting Style **HEART MODIFIED BRILLIANT**
Measurements **6.36 X 6.61 X 3.39 MM**

GRADING RESULTS
Carat Weight **1.04 CARAT**
Color Grade **FANCY VIVID PINK**
Clarity Grade **SI 1**

ADDITIONAL GRADING INFORMATION
Polish **EXCELLENT**
Symmetry **EXCELLENT**
Fluorescence **STRONG**
Inscription(s) **IGI LG779630130**

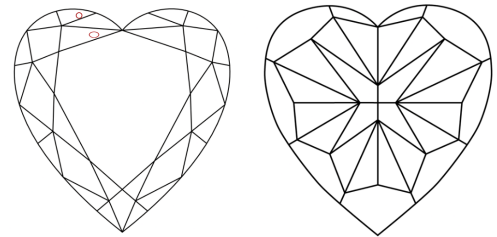
Comments: This Laboratory Grown Diamond was created by Chemical Vapor Deposition (CVD) growth process. Indications of post-growth treatment.

PROPORTIONS



Sample Image Used

CLARITY CHARACTERISTICS



KEY TO SYMBOLS
Red symbols indicate internal characteristics.
Green symbols indicate external characteristics.

COLOR

D	E	F	G	H	I	J	Faint	Very Light	Light
---	---	---	---	---	---	---	-------	------------	-------

CLARITY

FL	IF	VS ¹⁻²	VS ¹⁻²	SI ¹⁻²	I ¹⁻³
Flawless	Internally Flawless	Very Very Slightly Included	Very Slightly Included	Slightly Included	Included

