



**ELECTRONIC COPY**

LG779629654  
Report verification at igi.org



March 9, 2026

IGI Report Number **LG779629654**

Description **LABORATORY GROWN DIAMOND**

Shape and Cutting Style **PEAR MODIFIED BRILLIANT**

Measurements **9.40 X 5.84 X 3.21 MM**

**GRADING RESULTS**

Carat Weight **1.20 CARAT**

Color Grade **FANCY VIVID GREEN**

Clarity Grade **VS 2**

March 9, 2026

IGI Report Number **LG779629654**

Description **LABORATORY GROWN DIAMOND**

Shape and Cutting Style **PEAR MODIFIED BRILLIANT**

Measurements **9.40 X 5.84 X 3.21 MM**

**GRADING RESULTS**

Carat Weight **1.20 CARAT**

Color Grade **FANCY VIVID GREEN**

Clarity Grade **VS 2**

**ADDITIONAL GRADING INFORMATION**

Polish **EXCELLENT**

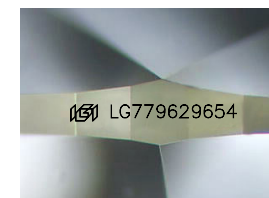
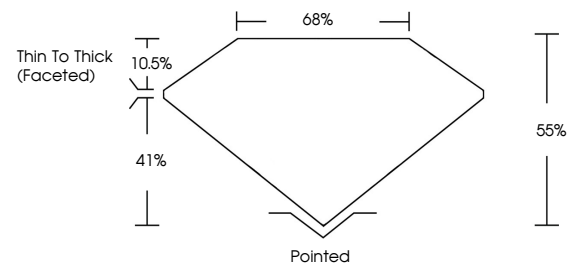
Symmetry **EXCELLENT**

Fluorescence **NONE**

Inscription(s) **IGI LG779629654**

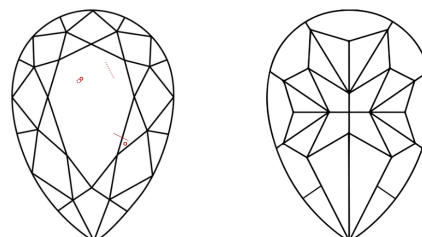
Comments: This Laboratory Grown Diamond was created by Chemical Vapor Deposition (CVD) growth process. Indications of post-growth treatment.

**PROPORTIONS**



Sample Image Used

**CLARITY CHARACTERISTICS**



**KEY TO SYMBOLS**

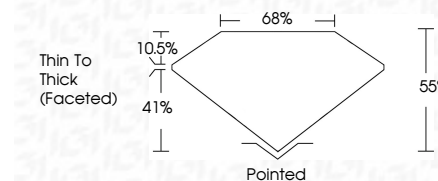
Red symbols indicate internal characteristics.  
Green symbols indicate external characteristics.

**COLOR**

D E F G H I J Faint Very Light Light

**CLARITY**

FL	IF	VS <sup>1-2</sup>	VS <sup>1-2</sup>	SI <sup>1-2</sup>	I <sup>1-3</sup>
Flawless	Internally Flawless	Very Very Slightly Included	Very Slightly Included	Slightly Included	Included



**ADDITIONAL GRADING INFORMATION**

Polish **EXCELLENT**

Symmetry **EXCELLENT**

Fluorescence **NONE**

Inscription(s) **IGI LG779629654**

Comments: This Laboratory Grown Diamond was created by Chemical Vapor Deposition (CVD) growth process. Indications of post-growth treatment.



March 9, 2026  
IGI Report No LG779629654  
**PEAR MODIFIED BRILLIANT**

9.40 X 5.84 X 3.21 MM  
1.20 CARAT  
FANCY VIVID GREEN  
VS 2  
68%  
55%  
Thin To Thick (Faceted)

Pointed  
EXCELLENT  
EXCELLENT  
NONE  
IGI LG779629654

Comments: This Laboratory Grown Diamond was created by Chemical Vapor Deposition (CVD) growth process. Indications of post-growth treatment.