



ELECTRONIC COPY

LG779629623
Report verification at igi.org



March 9, 2026
IGI Report Number LG779629623
Description LABORATORY GROWN DIAMOND
Shape and Cutting Style CUT CORNERED RECTANGULAR MODIFIED BRILLIANT
Measurements 8.69 X 6.17 X 4.23 MM
GRADING RESULTS
Carat Weight 2.04 CARATS
Color Grade FANCY INTENSE PINK
Clarity Grade VS 1

March 9, 2026
IGI Report Number LG779629623
Description LABORATORY GROWN DIAMOND
Shape and Cutting Style CUT CORNERED RECTANGULAR MODIFIED BRILLIANT
Measurements 8.69 X 6.17 X 4.23 MM

GRADING RESULTS

Carat Weight 2.04 CARATS
Color Grade FANCY INTENSE PINK
Clarity Grade VS 1

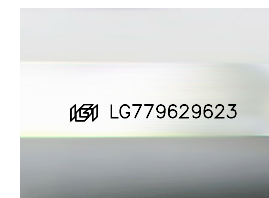
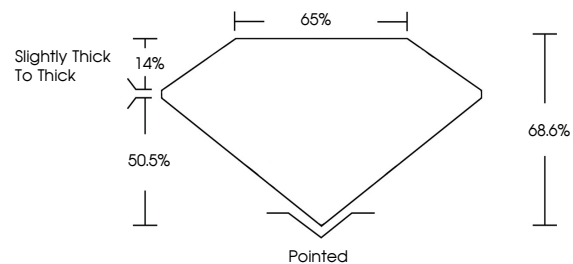
ADDITIONAL GRADING INFORMATION

Polish EXCELLENT
Symmetry EXCELLENT
Fluorescence SLIGHT
Inscription(s) LG779629623

Comments: This Laboratory Grown Diamond was created by Chemical Vapor Deposition (CVD) growth process.
Indications of post-growth treatment.

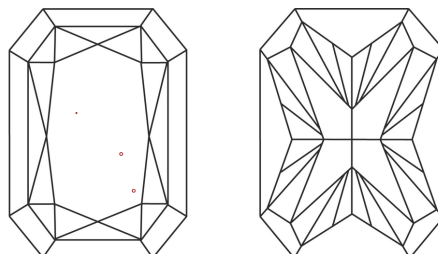
Secondary color: Brown

PROPORTIONS



Sample Image Used

CLARITY CHARACTERISTICS



KEY TO SYMBOLS

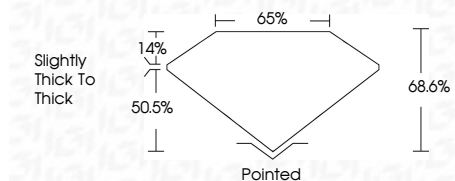
Red symbols indicate internal characteristics.
Green symbols indicate external characteristics.

COLOR

D E F G H I J Faint Very Light Light

CLARITY

FL IF VS 1-2 VS 2-2 SI 1-2 I 1-3
Flawless Internally Flawless Very Very Slightly Included Very Slightly Included Slightly Included Included



ADDITIONAL GRADING INFORMATION

Polish EXCELLENT
Symmetry EXCELLENT
Fluorescence SLIGHT
Inscription(s) LG779629623
Comments: This Laboratory Grown Diamond was created by Chemical Vapor Deposition (CVD) growth process.
Indications of post-growth treatment.
Secondary color: Brown



IGI



March 9, 2026
IGI Report No LG779629623
CUT CORNERED RECT. MODIFIED BRILLIANT
8.69 X 6.17 X 4.23 MM
2.04 CARATS
FANCY INTENSE PINK
VS 1
68.6%
50.5%
Slightly Thick To Thick
Pointed
EXCELLENT
EXCELLENT
SLIGHT
LG779629623

Comments: This Laboratory Grown Diamond was created by Chemical Vapor Deposition (CVD) growth process.
Indications of post-growth treatment.
Secondary color: Brown