



ELECTRONIC COPY

LG779629102
Report verification at igi.org



March 9, 2026
IGI Report Number: LG779629102
Description: LABORATORY GROWN DIAMOND
Shape and Cutting Style: ROUND BRILLIANT
Measurements: 6.47 - 6.50 X 4.03 MM
GRADING RESULTS
Carat Weight: 1.02 CARAT
Color Grade: F
Clarity Grade: VS 2
Cut Grade: IDEAL

March 9, 2026
IGI Report Number: LG779629102
Description: LABORATORY GROWN DIAMOND
Shape and Cutting Style: ROUND BRILLIANT
Measurements: 6.47 - 6.50 X 4.03 MM

GRADING RESULTS

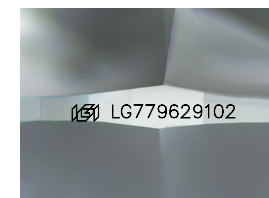
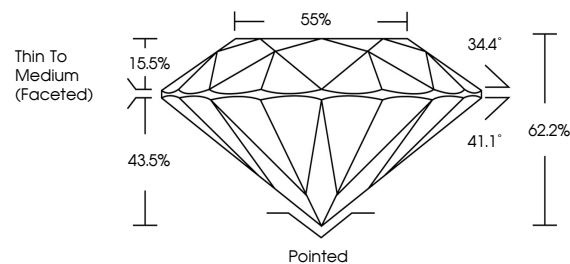
Carat Weight: 1.02 CARAT
Color Grade: F
Clarity Grade: VS 2
Cut Grade: IDEAL

ADDITIONAL GRADING INFORMATION

Polish: EXCELLENT
Symmetry: EXCELLENT
Fluorescence: NONE
Inscription(s): IGI LG779629102

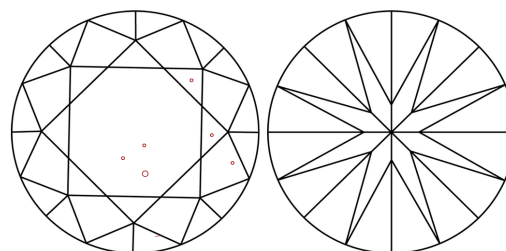
Comments: This Laboratory Grown Diamond was created by Chemical Vapor Deposition (CVD) growth process. Type IIa

PROPORTIONS



Sample Image Used

CLARITY CHARACTERISTICS



KEY TO SYMBOLS

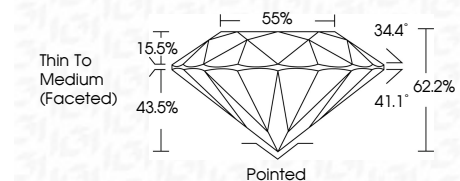
Red symbols indicate internal characteristics.
Green symbols indicate external characteristics.

COLOR

D E F G H I J Faint Very Light Light

CLARITY

FL IF VS 1-2 VS 1-2 SI 1-2 I 1-3
Flawless Internally Flawless Very Very Slightly Included Very Slightly Included Slightly Included Included



ADDITIONAL GRADING INFORMATION

Polish: EXCELLENT
Symmetry: EXCELLENT
Fluorescence: NONE
Inscription(s): IGI LG779629102
Comments: This Laboratory Grown Diamond was created by Chemical Vapor Deposition (CVD) growth process. Type IIa



March 9, 2026
IGI Report No. LG779629102
ROUND BRILLIANT
6.47 - 6.50 X 4.03 MM
1.02 CARAT
Color Grade: F
Clarity Grade: VS 2
Depth: IDEAL
Table: 62.2%
Girdle: 85%
Thin To Medium (Faceted)
Culet: Pointed
Polish: EXCELLENT
Symmetry: EXCELLENT
Fluorescence: NONE
Inscription(s): IGI LG779629102
Comments: This Laboratory Grown Diamond was created by Chemical Vapor Deposition (CVD) growth process. Type IIa