



**INTERNATIONAL
GEMOLOGICAL
INSTITUTE**

ELECTRONIC COPY



February 28, 2026

IGI Report Number **LG779628053**

**MARQUISE BRILLIANT
LABORATORY GROWN DIAMOND**
7.53 X 3.86 X 2.47 MM

Carat Weight **0.42 CARAT**
Color Grade **D**
Clarity Grade **VVS 2**
Polish **EXCELLENT**
Symmetry **EXCELLENT**
Fluorescence **NONE**
Inscription(s) **IGI LG779628053**

Comments: This Laboratory Grown Diamond was created by Chemical Vapor Deposition (CVD) growth process. Type IIa

LABORATORY GROWN DIAMOND REPORT

February 28, 2026

IGI Report Number

LG779628053

Description

LABORATORY GROWN DIAMOND

Shape and Cutting Style

MARQUISE BRILLIANT

Measurements

7.53 X 3.86 X 2.47 MM

GRADING RESULTS

Carat Weight

0.42 CARAT

Color Grade

D

Clarity Grade

VVS 2

ADDITIONAL GRADING INFORMATION

Polish

EXCELLENT

Symmetry

EXCELLENT

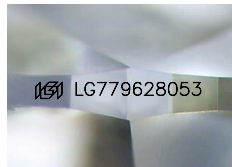
Fluorescence

NONE

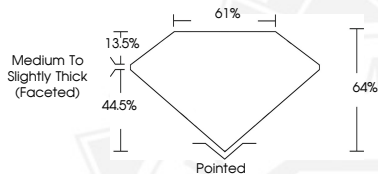
Inscription(s)

IGI LG779628053

Comments: This Laboratory Grown Diamond was created by Chemical Vapor Deposition (CVD) growth process. Type IIa



Sample Image Used



February 28, 2026

IGI Report Number **LG779628053**

**MARQUISE BRILLIANT
LABORATORY GROWN DIAMOND**
7.53 X 3.86 X 2.47 MM

Carat Weight **0.42 CARAT**
Color Grade **D**
Clarity Grade **VVS 2**
Polish **EXCELLENT**
Symmetry **EXCELLENT**
Fluorescence **NONE**
Inscription(s) **IGI LG779628053**

Comments: This Laboratory Grown Diamond was created by Chemical Vapor Deposition (CVD) growth process. Type IIa



THIS DOCUMENT WAS PRODUCED WITH THE FOLLOWING SECURITY MEASURES: SPECIAL DOCUMENT PAPER, INK SCREENS, WATERMARK, BACKGROUND DESIGNS, HOLOGRAM AND OTHER SECURITY FEATURES NOT LISTED AND DO EXCEED DOCUMENT SECURITY INDUSTRY GUIDELINES.

For terms & conditions and to verify this report, please visit www.igi.org