



ELECTRONIC COPY

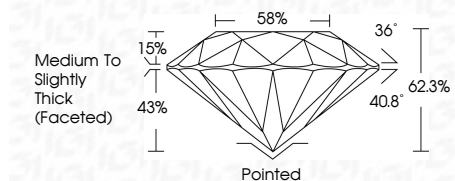
LG779621567 Report verification at igi.org



March 7, 2026 IGI Report Number LG779621567 Description LABORATORY GROWN DIAMOND Shape and Cutting Style ROUND BRILLIANT Measurements 7.96 - 8.01 X 4.97 MM

GRADING RESULTS

Carat Weight 1.98 CARAT Color Grade D Clarity Grade VVS 2 Cut Grade IDEAL



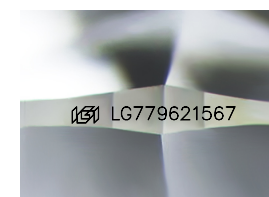
ADDITIONAL GRADING INFORMATION

Polish EXCELLENT Symmetry EXCELLENT Fluorescence NONE Inscription(s) IGI LG779621567 Comments: This Laboratory Grown Diamond was created by Chemical Vapor Deposition (CVD) growth process. Type IIa



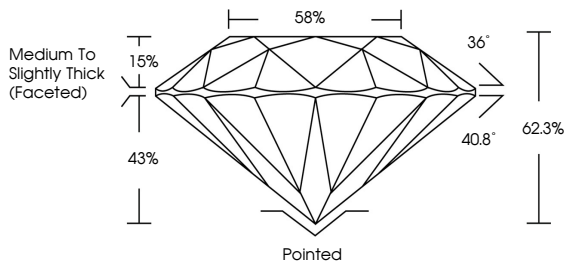
March 7, 2026 IGI Report No LG779621567 ROUND BRILLIANT 1.98 CARAT D VVS 2 IDEAL 88% Medium To Slightly Thick (Faceted) Pointed EXCELLENT EXCELLENT NONE IGI LG779621567

Comments: This Laboratory Grown Diamond was created by Chemical Vapor Deposition (CVD) growth process. Type IIa

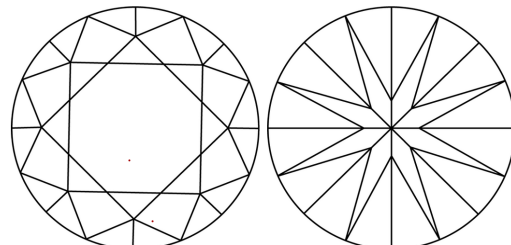


Sample Image Used

PROPORTIONS



CLARITY CHARACTERISTICS



KEY TO SYMBOLS

Red symbols indicate internal characteristics. Green symbols indicate external characteristics.

COLOR

D E F G H I J Faint Very Light Light

CLARITY

FL IF VVS 1-2 VS 1-2 SI 1-2 I 1-3 Flawless Internally Flawless Very Very Slightly Included Very Slightly Included Slightly Included Included



March 7, 2026 IGI Report Number LG779621567 Description LABORATORY GROWN DIAMOND Shape and Cutting Style ROUND BRILLIANT Measurements 7.96 - 8.01 X 4.97 MM

GRADING RESULTS

Carat Weight 1.98 CARAT Color Grade D Clarity Grade VVS 2 Cut Grade IDEAL

ADDITIONAL GRADING INFORMATION

Polish EXCELLENT Symmetry EXCELLENT Fluorescence NONE Inscription(s) IGI LG779621567

Comments: This Laboratory Grown Diamond was created by Chemical Vapor Deposition (CVD) growth process. Type IIa