



**ELECTRONIC COPY**

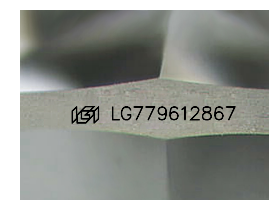
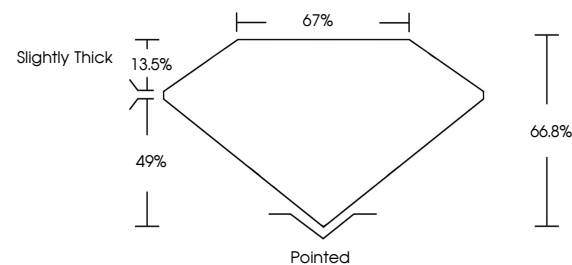
LG779612867  
Report verification at igi.org



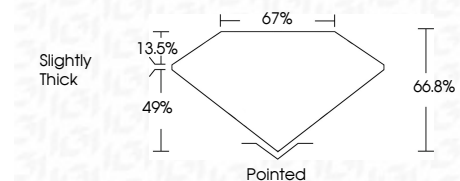
February 28, 2026  
IGI Report Number **LG779612867**  
Description **LABORATORY GROWN DIAMOND**  
Shape and Cutting Style **HEXAGONAL MODIFIED BRILLIANT**  
Measurements **13.36 X 7.20 X 4.81 MM**  
**GRADING RESULTS**  
Carat Weight **2.84 CARATS**  
Color Grade **E**  
Clarity Grade **VVS 2**

February 28, 2026  
IGI Report Number **LG779612867**  
Description **LABORATORY GROWN DIAMOND**  
Shape and Cutting Style **HEXAGONAL MODIFIED BRILLIANT**  
Measurements **13.36 X 7.20 X 4.81 MM**

**PROPORTIONS**



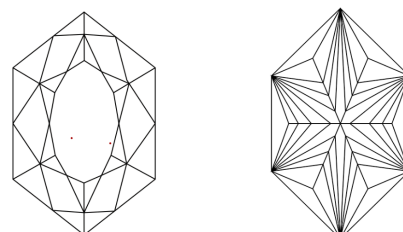
Sample Image Used



**GRADING RESULTS**

Carat Weight **2.84 CARATS**  
Color Grade **E**  
Clarity Grade **VVS 2**

**CLARITY CHARACTERISTICS**



**KEY TO SYMBOLS**

Red symbols indicate internal characteristics.  
Green symbols indicate external characteristics.

**ADDITIONAL GRADING INFORMATION**

Polish **EXCELLENT**  
Symmetry **EXCELLENT**  
Fluorescence **NONE**  
Inscription(s) **IGI LG779612867**

**COLOR**

D E F G H I J Faint Very Light Light

**CLARITY**

FL	IF	VVS <sup>1-2</sup>	VS <sup>1-2</sup>	SI <sup>1-2</sup>	I <sup>1-3</sup>
Flawless	Internally Flawless	Very Very Slightly Included	Very Slightly Included	Slightly Included	Included

**ADDITIONAL GRADING INFORMATION**

Polish **EXCELLENT**  
Symmetry **EXCELLENT**  
Fluorescence **NONE**  
Inscription(s) **IGI LG779612867**  
Comments: This Laboratory Grown Diamond was created by Chemical Vapor Deposition (CVD) growth process. Type IIa



**IGI**



February 28, 2026  
IGI Report No **LG779612867**  
**HEXAGONAL MODIFIED BRILLIANT**  
13.36 X 7.20 X 4.81 MM  
2.84 CARATS  
E  
VVS 2  
66.8%  
67%  
Slightly Thick  
Pointed  
EXCELLENT  
EXCELLENT  
NONE  
IGI LG779612867  
Comments: This Laboratory Grown Diamond was created by Chemical Vapor Deposition (CVD) growth process. Type IIa