



ELECTRONIC COPY

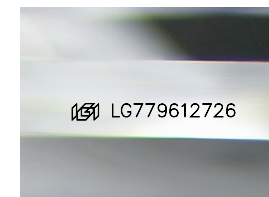
LG779612726
Report verification at igi.org



March 17, 2026
IGI Report Number **LG779612726**
Description **LABORATORY GROWN DIAMOND**
Shape and Cutting Style **PRINCESS MIXED CUT**
Measurements **9.32 X 9.24 X 5.90 MM**

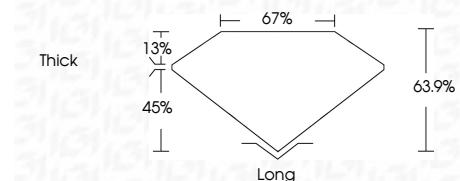
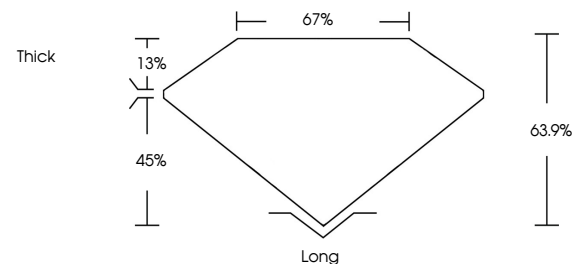
GRADING RESULTS

Carat Weight **5.07 CARATS**
Color Grade **D**
Clarity Grade **VVS 2**

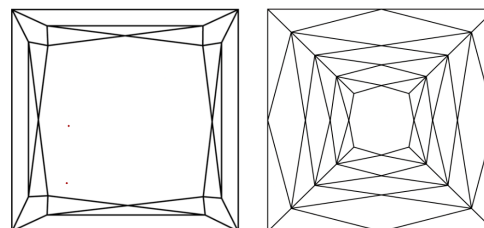


Sample Image Used

PROPORTIONS



CLARITY CHARACTERISTICS



KEY TO SYMBOLS

Red symbols indicate internal characteristics.
Green symbols indicate external characteristics.

COLOR

D E F G H I J Faint Very Light Light

CLARITY

FL	IF	VVS ¹⁻²	VS ¹⁻²	SI ¹⁻²	I ¹⁻³
Flawless	Internally Flawless	Very Very Slightly Included	Very Slightly Included	Slightly Included	Included

ADDITIONAL GRADING INFORMATION

Polish **EXCELLENT**
Symmetry **EXCELLENT**
Fluorescence **NONE**
Inscription(s) **IGI LG779612726**
Comments: This Laboratory Grown Diamond was created by Chemical Vapor Deposition (CVD) growth process. Type IIa



IGI



March 17, 2026
IGI Report No LG779612726
PRINCESS MIXED CUT

9.32 X 9.24 X 5.90 MM

5.07 CARATS
D

Carat Weight
Color Grade
Clarity Grade
Depth
Table
Girdle
Culet

VVS 2
63.9%
67%
Thick

Long
EXCELLENT
EXCELLENT
NONE
IGI LG779612726

Polish
Symmetry
Fluorescence
Inscription(s)

EXCELLENT
EXCELLENT
NONE
IGI LG779612726

Comments: This Laboratory Grown Diamond was created by Chemical Vapor Deposition (CVD) growth process. Type IIa