



ELECTRONIC COPY

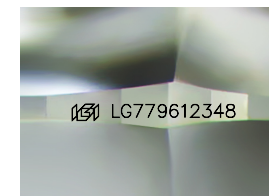
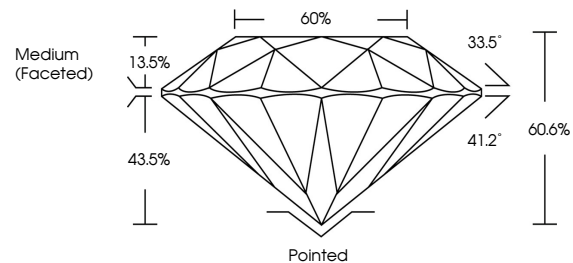
LG779612348
Report verification at igi.org



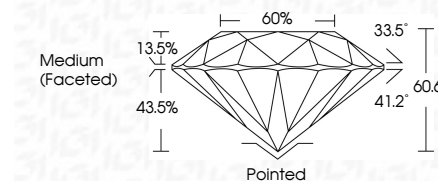
March 16, 2026
IGI Report Number **LG779612348**
Description **LABORATORY GROWN DIAMOND**
Shape and Cutting Style **ROUND BRILLIANT**
Measurements **6.85 - 6.88 X 4.16 MM**
GRADING RESULTS
Carat Weight **1.19 CARAT**
Color Grade **FANCY INTENSE YELLOW**
Clarity Grade **VVS 1**
Cut Grade **IDEAL**

March 16, 2026
IGI Report Number **LG779612348**
Description **LABORATORY GROWN DIAMOND**
Shape and Cutting Style **ROUND BRILLIANT**
Measurements **6.85 - 6.88 X 4.16 MM**
GRADING RESULTS
Carat Weight **1.19 CARAT**
Color Grade **FANCY INTENSE YELLOW**
Clarity Grade **VVS 1**
Cut Grade **IDEAL**

PROPORTIONS



Sample Image Used



ADDITIONAL GRADING INFORMATION

Polish **EXCELLENT**
Symmetry **EXCELLENT**
Fluorescence **NONE**
Inscription(s) **IGI LG779612348**

Comments: As Grown - No indication of post-growth treatment.
This Laboratory Grown Diamond was created by High Pressure High Temperature (HPHT) growth process.

COLOR

D E F G H I J Faint Very Light Light

CLARITY

FL	IF	VVS ¹⁻²	VS ¹⁻²	SI ¹⁻²	I ¹⁻³
Flawless	Internally Flawless	Very Very Slightly Included	Very Slightly Included	Slightly Included	Included

ADDITIONAL GRADING INFORMATION

Polish **EXCELLENT**
Symmetry **EXCELLENT**
Fluorescence **NONE**
Inscription(s) **IGI LG779612348**
Comments: As Grown - No indication of post-growth treatment.
This Laboratory Grown Diamond was created by High Pressure High Temperature (HPHT) growth process.



IGI



March 16, 2026
IGI Report No LG779612348
ROUND BRILLIANT
6.85 - 6.88 X 4.16 MM
1.19 CARAT
Color Grade **FANCY INTENSE YELLOW**
Clarity Grade **VVS 1**
Depth **IDEAL**
Table **60.6%**
Girdle **Medium (Faceted)**
Culet **Pointed**
Polish **EXCELLENT**
Symmetry **EXCELLENT**
Fluorescence **NONE**
Inscriptions(s) **IGI LG779612348**
Comments: As Grown - No indication of post-growth treatment.
This Laboratory Grown Diamond was created by High Pressure High Temperature (HPHT) growth process.