



ELECTRONIC COPY

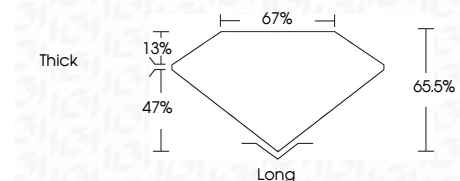
LG779612073
Report verification at igi.org



March 11, 2026
IGI Report Number **LG779612073**
Description **LABORATORY GROWN DIAMOND**
Shape and Cutting Style **PRINCESS MIXED CUT**
Measurements **8.57 X 8.53 X 5.59 MM**

GRADING RESULTS

Carat Weight **4.05 CARATS**
Color Grade **D**
Clarity Grade **VVS 2**



ADDITIONAL GRADING INFORMATION

Polish **EXCELLENT**
Symmetry **EXCELLENT**
Fluorescence **NONE**
Inscription(s) **IGI LG779612073**
Comments: This Laboratory Grown Diamond was created by Chemical Vapor Deposition (CVD) growth process. Type IIa



March 11, 2026
IGI Report No LG779612073
PRINCESS MIXED CUT
8.57 X 8.53 X 5.59 MM
4.05 CARATS
D
VVS 2
65.5%
67%
Thick
Long
EXCELLENT
EXCELLENT
NONE
IGI LG779612073
Comments: This Laboratory Grown Diamond was created by Chemical Vapor Deposition (CVD) growth process. Type IIa

LABORATORY GROWN DIAMOND REPORT

March 11, 2026
IGI Report Number **LG779612073**
Description **LABORATORY GROWN DIAMOND**
Shape and Cutting Style **PRINCESS MIXED CUT**
Measurements **8.57 X 8.53 X 5.59 MM**

GRADING RESULTS

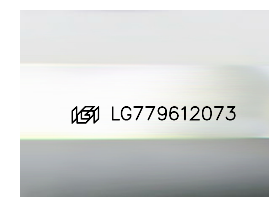
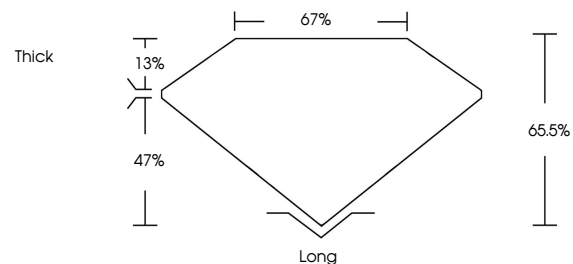
Carat Weight **4.05 CARATS**
Color Grade **D**
Clarity Grade **VVS 2**

ADDITIONAL GRADING INFORMATION

Polish **EXCELLENT**
Symmetry **EXCELLENT**
Fluorescence **NONE**
Inscription(s) **IGI LG779612073**

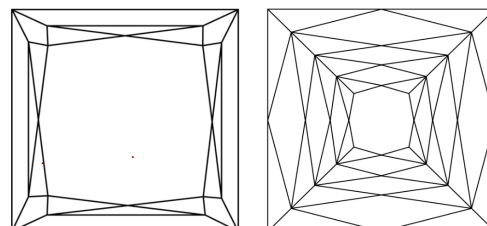
Comments: This Laboratory Grown Diamond was created by Chemical Vapor Deposition (CVD) growth process. Type IIa

PROPORTIONS



Sample Image Used

CLARITY CHARACTERISTICS



KEY TO SYMBOLS

Red symbols indicate internal characteristics.
Green symbols indicate external characteristics.

COLOR

D E F G H I J Faint Very Light Light

CLARITY

FL	IF	VVS ¹⁻²	VS ¹⁻²	SI ¹⁻²	I ¹⁻³
Flawless	Internally Flawless	Very Very Slightly Included	Very Slightly Included	Slightly Included	Included

