



**ELECTRONIC COPY**

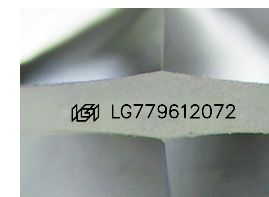
LG779612072  
Report verification at igi.org



March 11, 2026  
IGI Report Number **LG779612072**  
Description **LABORATORY GROWN DIAMOND**  
Shape and Cutting Style **SQUARE MIXED CUT**  
Measurements **7.77 X 7.70 X 5.15 MM**

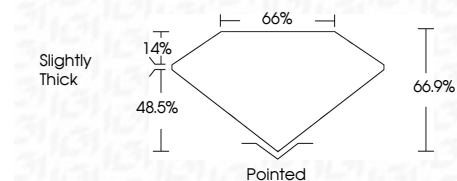
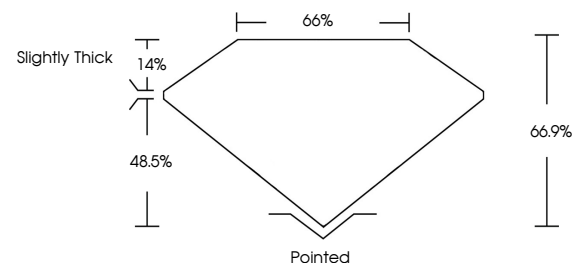
**GRADING RESULTS**

Carat Weight **3.06 CARATS**  
Color Grade **D**  
Clarity Grade **VVS 2**

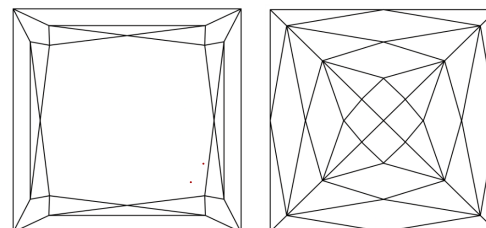


Sample Image Used

**PROPORTIONS**



**CLARITY CHARACTERISTICS**



**KEY TO SYMBOLS**

Red symbols indicate internal characteristics.  
Green symbols indicate external characteristics.

**COLOR**

D E F G H I J Faint Very Light Light

**CLARITY**

FL	IF	VVS <sup>1-2</sup>	VS <sup>1-2</sup>	SI <sup>1-2</sup>	I <sup>1-3</sup>
Flawless	Internally Flawless	Very Very Slightly Included	Very Slightly Included	Slightly Included	Included

**ADDITIONAL GRADING INFORMATION**

Polish **EXCELLENT**  
Symmetry **EXCELLENT**  
Fluorescence **NONE**  
Inscription(s) **IGI LG779612072**  
Comments: This Laboratory Grown Diamond was created by Chemical Vapor Deposition (CVD) growth process. Type IIa



**IGI**



March 11, 2026  
IGI Report No LG779612072  
**SQUARE MIXED CUT**  
3.06 CARATS  
Color Grade **D**  
Clarity Grade **VVS 2**  
Table **66.9%**  
Depth **48.5%**  
Girdle **Slightly Thick**  
Culet **Pointed**  
Polish **EXCELLENT**  
Symmetry **EXCELLENT**  
Fluorescence **NONE**  
Inscription(s) **IGI LG779612072**

Comments: This Laboratory Grown Diamond was created by Chemical Vapor Deposition (CVD) growth process. Type IIa