



ELECTRONIC COPY

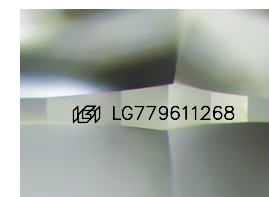
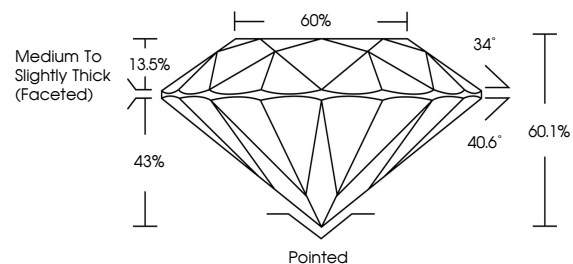
LG779611268 Report verification at igi.org



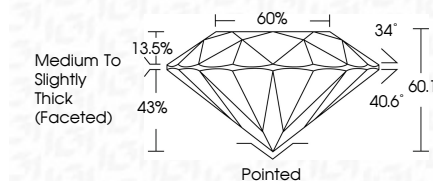
March 2, 2026 IGI Report Number LG779611268 Description LABORATORY GROWN DIAMOND Shape and Cutting Style ROUND BRILLIANT Measurements 11.00 - 11.08 X 6.64 MM GRADING RESULTS Carat Weight 5.03 CARATS Color Grade F Clarity Grade VVS 2 Cut Grade IDEAL

March 2, 2026 IGI Report Number LG779611268 Description LABORATORY GROWN DIAMOND Shape and Cutting Style ROUND BRILLIANT Measurements 11.00 - 11.08 X 6.64 MM GRADING RESULTS Carat Weight 5.03 CARATS Color Grade F Clarity Grade VVS 2 Cut Grade IDEAL

PROPORTIONS



Sample Image Used



ADDITIONAL GRADING INFORMATION

Polish EXCELLENT Symmetry EXCELLENT Fluorescence NONE Inscription(s) IGI LG779611268

Comments: This Laboratory Grown Diamond was created by Chemical Vapor Deposition (CVD) growth process. Type IIa

ADDITIONAL GRADING INFORMATION

Polish EXCELLENT Symmetry EXCELLENT Fluorescence NONE Inscription(s) IGI LG779611268 Comments: This Laboratory Grown Diamond was created by Chemical Vapor Deposition (CVD) growth process. Type IIa

COLOR

D E F G H I J Faint Very Light Light

CLARITY

FL IF VS 1-2 VS 1-2 SI 1-2 I 1-3 Flawless Internally Flawless Very Very Slightly Included Very Slightly Included Slightly Included Included



IGI



Summary of report details including date, report number, description, measurements, grading results, and additional information.