



ELECTRONIC COPY

LG779609144
Report verification at igi.org



March 3, 2026

IGI Report Number **LG779609144**

Description **LABORATORY GROWN DIAMOND**

Shape and Cutting Style **CUT CORNERED RECTANGULAR MODIFIED BRILLIANT**

Measurements **10.56 X 7.18 X 5.12 MM**

GRADING RESULTS

Carat Weight **4.02 CARATS**

Color Grade **FANCY VIVID PINK**

Clarity Grade **VVS 2**

March 3, 2026

IGI Report Number **LG779609144**

Description **LABORATORY GROWN DIAMOND**

Shape and Cutting Style **CUT CORNERED RECTANGULAR MODIFIED BRILLIANT**

Measurements **10.56 X 7.18 X 5.12 MM**

GRADING RESULTS

Carat Weight **4.02 CARATS**

Color Grade **FANCY VIVID PINK**

Clarity Grade **VVS 2**

ADDITIONAL GRADING INFORMATION

Polish **EXCELLENT**

Symmetry **EXCELLENT**

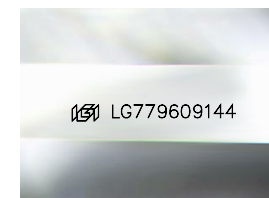
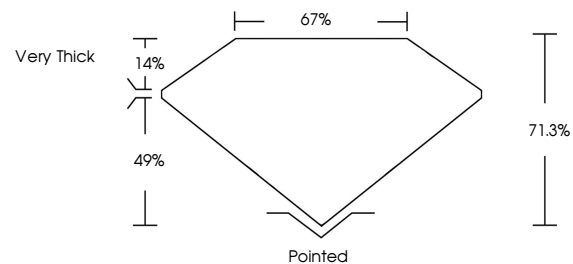
Fluorescence **STRONG**

Inscription(s) **IGI LG779609144**

Comments: This Laboratory Grown Diamond was created by Chemical Vapor Deposition (CVD) growth process.

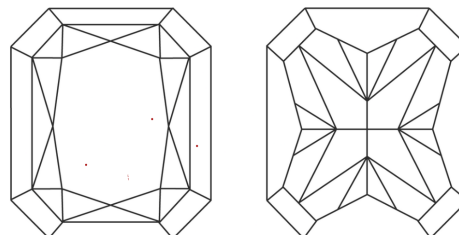
Indications of post-growth treatment.

PROPORTIONS



Sample Image Used

CLARITY CHARACTERISTICS



KEY TO SYMBOLS

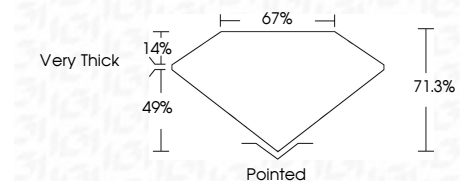
Red symbols indicate internal characteristics.
Green symbols indicate external characteristics.

COLOR

D E F G H I J Faint Very Light Light

CLARITY

FL IF VVS¹⁻² VS¹⁻² SI¹⁻² I¹⁻³
Flawless Internally Flawless Very Very Slightly Included Very Slightly Included Slightly Included Included



ADDITIONAL GRADING INFORMATION

Polish **EXCELLENT**

Symmetry **EXCELLENT**

Fluorescence **STRONG**

Inscription(s) **IGI LG779609144**

Comments: This Laboratory Grown Diamond was created by Chemical Vapor Deposition (CVD) growth process. Indications of post-growth treatment.



March 3, 2026
IGI Report No LG779609144
CUT CORNERED RECT. MODIFIED BRILLIANT

4.02 CARATS
Carat Weight
FANCY VIVID PINK
Color Grade

VVS 2
Clarity Grade

71.3%
Depth

67%
Table

Very Thick
Girdle

Pointed
Culet

EXCELLENT
Polish

EXCELLENT
Symmetry

STRONG
Fluorescence

IGI LG779609144
Inscription(s)

Comments: This Laboratory Grown Diamond was created by Chemical Vapor Deposition (CVD) growth process. Indications of post-growth treatment.