



**ELECTRONIC COPY**

**LABORATORY GROWN DIAMOND REPORT**

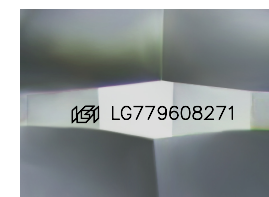
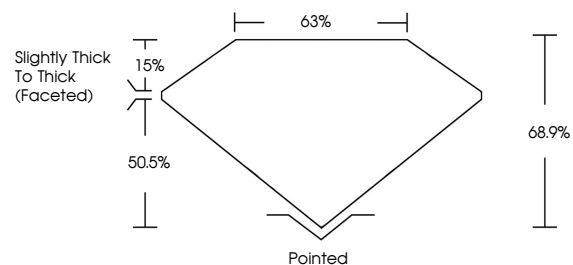
March 7, 2026  
IGI Report Number **LG779608271**  
Description **LABORATORY GROWN DIAMOND**  
Shape and Cutting Style **SQUARE CUSHION MODIFIED BRILLIANT**  
Measurements **6.96 X 6.88 X 4.74 MM**  
**GRADING RESULTS**  
Carat Weight **1.92 CARAT**  
Color Grade **D**  
Clarity Grade **VVS 2**

**ADDITIONAL GRADING INFORMATION**

Polish **EXCELLENT**  
Symmetry **EXCELLENT**  
Fluorescence **NONE**  
Inscription(s) **IGI LG779608271**

Comments: As Grown - No indication of post-growth treatment.  
This Laboratory Grown Diamond was created by High Pressure High Temperature (HPHT) growth process. Type II

**PROPORTIONS**



Sample Image Used

**COLOR**

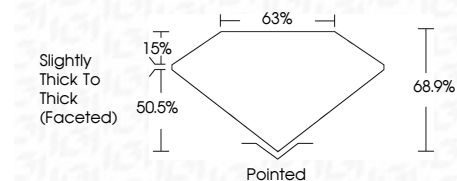
D E F G H I J Faint Very Light Light

**CLARITY**

FL	IF	VVS <sup>1-2</sup>	VS <sup>1-2</sup>	SI <sup>1-2</sup>	I <sup>1-3</sup>
Flawless	Internally Flawless	Very Very Slightly Included	Very Slightly Included	Slightly Included	Included



March 7, 2026  
IGI Report Number **LG779608271**  
Description **LABORATORY GROWN DIAMOND**  
Shape and Cutting Style **SQUARE CUSHION MODIFIED BRILLIANT**  
Measurements **6.96 X 6.88 X 4.74 MM**  
**GRADING RESULTS**  
Carat Weight **1.92 CARAT**  
Color Grade **D**  
Clarity Grade **VVS 2**



**ADDITIONAL GRADING INFORMATION**

Polish **EXCELLENT**  
Symmetry **EXCELLENT**  
Fluorescence **NONE**  
Inscription(s) **IGI LG779608271**  
Comments: As Grown - No indication of post-growth treatment.  
This Laboratory Grown Diamond was created by High Pressure High Temperature (HPHT) growth process. Type II



March 7, 2026  
IGI Report No **LG779608271**  
**SQUARE CUSHION MODIFIED BRILLIANT**  
**6.96 X 6.88 X 4.74 MM**  
Carat Weight **1.92 CARAT**  
Color Grade **D**  
Clarity Grade **VVS 2**  
Depth **68.9%**  
Table **63%**  
Girdle **Slightly Thick To Thick (Faceted)**  
Culet **Pointed**  
Polish **EXCELLENT**  
Symmetry **EXCELLENT**  
Fluorescence **NONE**  
Inscription(s) **IGI LG779608271**  
Comments: As Grown - No indication of post-growth treatment.  
This Laboratory Grown Diamond was created by High Pressure High Temperature (HPHT) growth process. Type II