



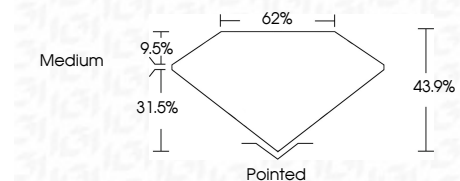
ELECTRONIC COPY

LG779607764
Report verification at igi.org



March 2, 2026
IGI Report Number **LG779607764**
Description **LABORATORY GROWN DIAMOND**
Shape and Cutting Style **TRIANGULAR MIXED CUT**
Measurements **12.23 X 13.67 X 6.00 MM**

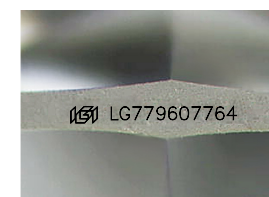
GRADING RESULTS
Carat Weight **4.55 CARATS**
Color Grade **E**
Clarity Grade **VVS 2**



ADDITIONAL GRADING INFORMATION
Polish **EXCELLENT**
Symmetry **EXCELLENT**
Fluorescence **NONE**
Inscription(s) **IGI LG779607764**
Comments: This Laboratory Grown Diamond was created by Chemical Vapor Deposition (CVD) growth process. Type IIa

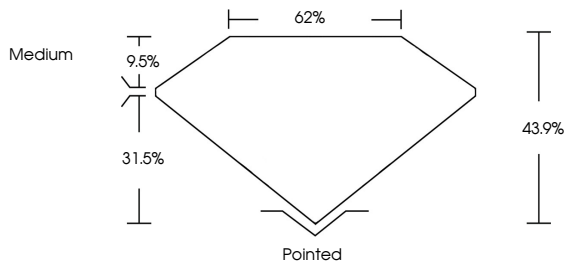


March 2, 2026
IGI Report No **LG779607764**
TRIANGULAR MIXED CUT
12.23 X 13.67 X 6.00 MM
Carat Weight **4.55 CARATS**
Color Grade **E**
Clarity Grade **VVS 2**
Depth **43.9%**
Table **9.5%**
Girdle **Medium**
Culet **Pointed**
Polish **EXCELLENT**
Symmetry **EXCELLENT**
Fluorescence **NONE**
Inscription(s) **IGI LG779607764**
Comments: This Laboratory Grown Diamond was created by Chemical Vapor Deposition (CVD) growth process. Type IIa

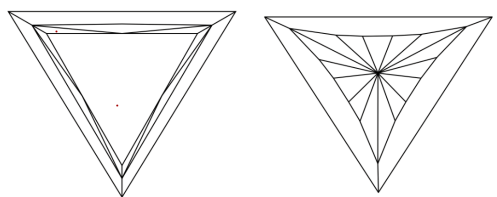


Sample Image Used

PROPORTIONS



CLARITY CHARACTERISTICS



KEY TO SYMBOLS
Red symbols indicate internal characteristics.
Green symbols indicate external characteristics.

COLOR

D	E	F	G	H	I	J	Faint	Very Light	Light
---	---	---	---	---	---	---	-------	------------	-------

CLARITY

FL	IF	VVS ¹⁻²	VS ¹⁻²	SI ¹⁻²	I ¹⁻³
Flawless	Internally Flawless	Very Very Slightly Included	Very Slightly Included	Slightly Included	Included

