



**ELECTRONIC COPY**

LG779607498  
Report verification at igi.org



March 3, 2026  
IGI Report Number **LG779607498**  
Description **LABORATORY GROWN DIAMOND**  
Shape and Cutting Style **ROUND BRILLIANT**  
Measurements **8.13 - 8.17 X 4.93 MM**  
**GRADING RESULTS**  
Carat Weight **2.00 CARATS**  
Color Grade **FANCY INTENSE PINK**  
Clarity Grade **VS 1**  
Cut Grade **IDEAL**

March 3, 2026  
IGI Report Number **LG779607498**  
Description **LABORATORY GROWN DIAMOND**  
Shape and Cutting Style **ROUND BRILLIANT**  
Measurements **8.13 - 8.17 X 4.93 MM**

**GRADING RESULTS**

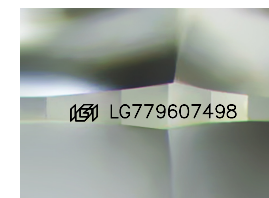
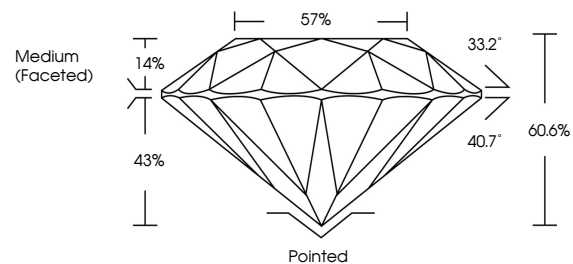
Carat Weight **2.00 CARATS**  
Color Grade **FANCY INTENSE PINK**  
Clarity Grade **VS 1**  
Cut Grade **IDEAL**

**ADDITIONAL GRADING INFORMATION**

Polish **EXCELLENT**  
Symmetry **EXCELLENT**  
Fluorescence **STRONG**  
Inscription(s) **LG779607498**

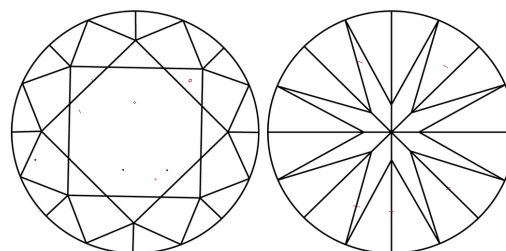
Comments: This Laboratory Grown Diamond was created by Chemical Vapor Deposition (CVD) growth process.  
Indications of post-growth treatment.

**PROPORTIONS**



Sample Image Used

**CLARITY CHARACTERISTICS**



**KEY TO SYMBOLS**

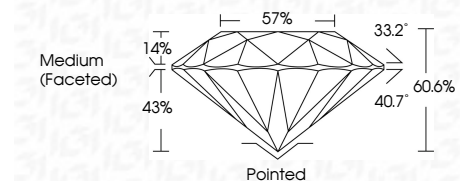
Red symbols indicate internal characteristics.  
Green symbols indicate external characteristics.

**COLOR**

D E F G H I J Faint Very Light Light

**CLARITY**

FL	IF	VS <sup>1-2</sup>	VS <sup>1-2</sup>	SI <sup>1-2</sup>	I <sup>1-3</sup>
Flawless	Internally Flawless	Very Very Slightly Included	Very Slightly Included	Slightly Included	Included



**ADDITIONAL GRADING INFORMATION**

Polish **EXCELLENT**  
Symmetry **EXCELLENT**  
Fluorescence **STRONG**  
Inscription(s) **LG779607498**  
Comments: This Laboratory Grown Diamond was created by Chemical Vapor Deposition (CVD) growth process.  
Indications of post-growth treatment.



March 3, 2026  
IGI Report No **LG779607498**  
**ROUND BRILLIANT**  
**8.13 - 8.17 X 4.93 MM**  
**2.00 CARATS**  
Carat Weight  
Color Grade **FANCY INTENSE PINK**  
Clarity Grade **VS 1**  
Cut Grade **IDEAL**  
Depth **60.6%**  
Table **57%**  
Girdle **Medium (Faceted)**  
Culet **Pointed**  
Polish **EXCELLENT**  
Symmetry **EXCELLENT**  
Fluorescence **STRONG**  
Inscription(s) **LG779607498**  
Comments: This Laboratory Grown Diamond was created by Chemical Vapor Deposition (CVD) growth process.  
Indications of post-growth treatment.